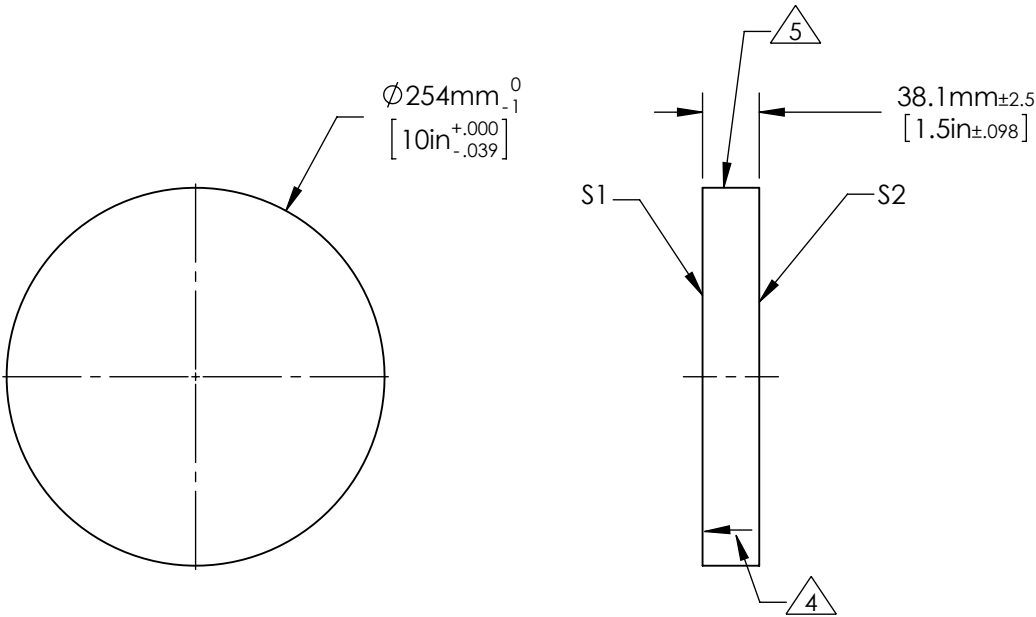


- NOTES:
- 1. ALLOWABLE OPTICAL MATERIAL:  
SCHOTT: Fused Silica 458/678
  - 2. SURFACE S2 TO BE PARALLEL WITH SURFACE S1 TO < 3 ARCMIN
  - 3. COATING (APPLY ACROSS COATING APERTURE)  
S1: PROTECTED ALUMINUM  
Ravg ≥ 85% 400-700nm @ 0° AOI

- S2: NONE
4. ARROW ON EDGE POINTING TOWARDS SURFACE S1.
5. FINE GROUND SURFACE



**FOR INFORMATION ONLY:**  
**DO NOT MANUFACTURE PARTS TO THIS DRAWING**

	S1	S2	EFL (AT 587.6nm)	NA	 Edmund Optics®	
SHAPE	PLANO	PLANO				
SURFACE ACCURACY AT 632.8nm	1/20 WAVE	NA	BFL (AT 587.6nm)	NA	TITLE	1/20λ Optical Flat, Fused Silica, 10inch Diameter PROTECTED ALUMINUM
SURFACE QUALITY	60 - 40	COMMERCIAL POLISH				
CLEAR APERTURE	ϕ 228.6	ϕ 228.6	ALL DIMS IN	mm	DWG NO	65879-522
BEVEL MAX FACE	1.0 x 45°	1.0 x 45°				