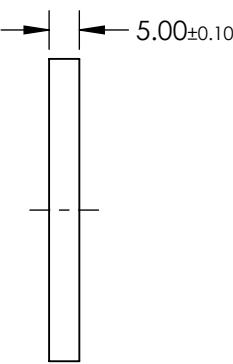
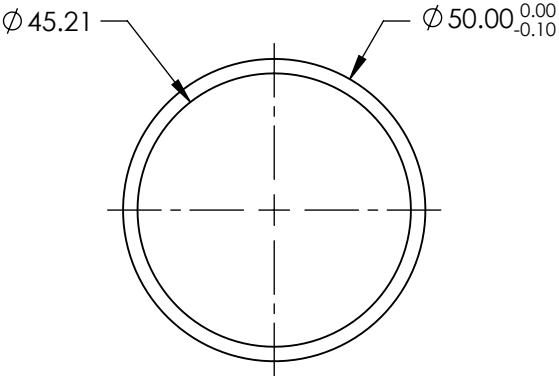
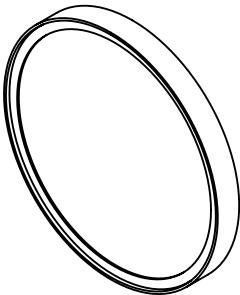


NOTES:


- 1. CONSTRUCTION: MOUNTED IN BLACK ANODIZED RING
- 2. COATING (APPLY ACROSS COATING APERTURE)  
DURABILITY: MIL-C-48497A  
PERFORMANCE SPECIFICATIONS:  
CWL: 405  
FWHM: 20.2  
REFLECTION %: >99  
TRANSMISSION %: >90
- 3. POWER, IRREGULARITY, AND SURFACE QUALITY SPECIFICATIONS  
APPLY ACROSS CLEAR APERTURE
- 4. TRANSMITTED WAVEFRONT DISTORTION RMS@ <1λ
- 5. ROHS COMPLIANT



**FOR INFORMATION ONLY:  
DO NOT MANUFACTURE  
PARTS TO THIS DRAWING**

SPECIFICATIONS SUBJECT TO CHANGE WITHOUT NOTICE  
DIMENSIONS ARE FOR REFERENCE ONLY



	S1	S2	<div>THIRD ANGLE PROJECTION</div> 		TITLE	OD4, Ø50mm, 405nm, NOTCH FILTER	
SHAPE	PLANO	PLANO					
SURFACE QUALITY	60-40	60-40	ALL DIMS IN	mm	DWG NO	67125	SHEET 1 OF 1
CLEAR APERTURE	Ø45.21	Ø45.21					