

NOTES:

1. CONSTRUCTION: MOUNTED IN BLACK ANODIZED RING
2. COATING (APPLY ACROSS COATING APERTURE)

DURABILITY: MIL-C-48497A

PERFORMANCE SPECIFICATIONS:

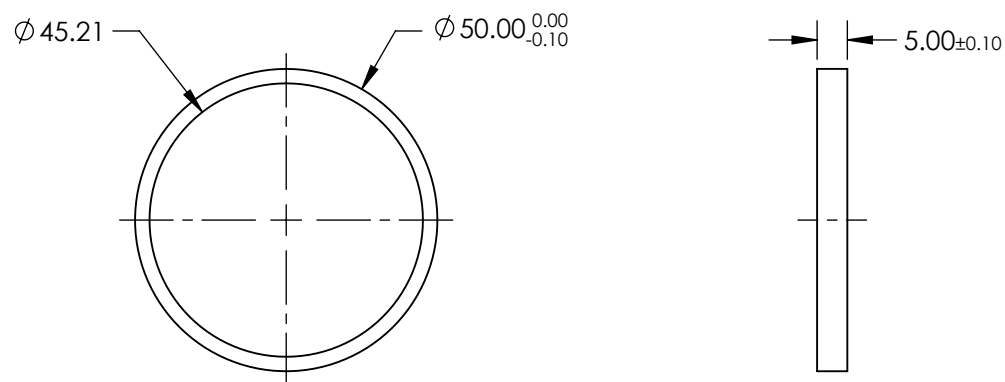
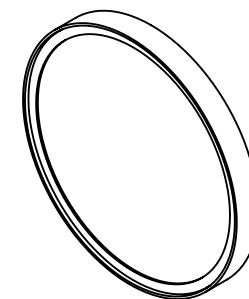
CWL: 1064

FWHM: 53.2

REFLECTION %: >99

TRANSMISSION %: >90


3. POWER, IRREGULARITY, AND SURFACE QUALITY SPECIFICATIONS APPLY ACROSS CLEAR APERTURE
4. TRANSMITTED WAVEFRONT DISTORTION RMS@ $<1\lambda$
5. ROHS COMPLIANT



**FOR INFORMATION ONLY:
DO NOT MANUFACTURE
PARTS TO THIS DRAWING**

SPECIFICATIONS SUBJECT TO CHANGE WITHOUT NOTICE
DIMENSIONS ARE FOR REFERENCE ONLY



	S1	S2	THIRD ANGLE 		TITLE	OD4, Ø50mm, 1064nm, NOTCH FILTER	
SHAPE	PLANO	PLANO			TITLE		
SURFACE QUALITY	60-40	60-40			TITLE		
CLEAR APERTURE	Ø45.21	Ø45.21	ALL DIMS IN	mm	DWG NO	67132	SHEET 1 OF 1