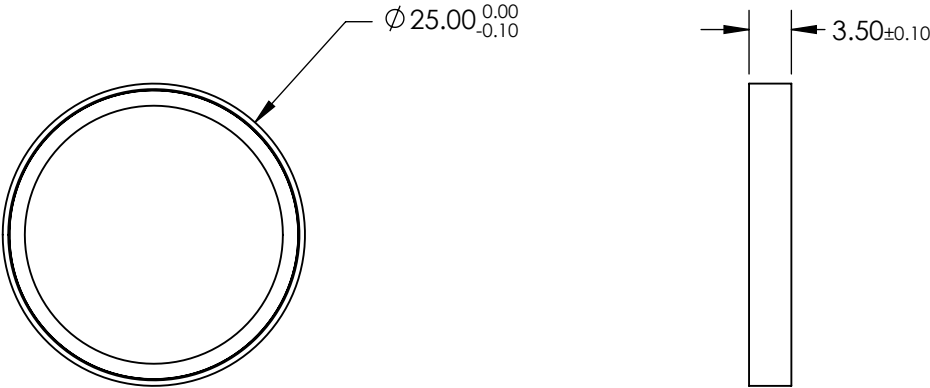
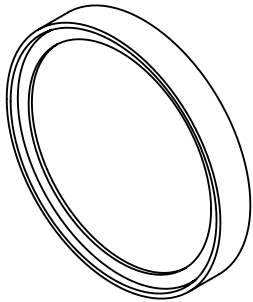


NOTES:

- 1. SUBSTRATE
- 2. SURFACE S2 TO BE PARALLEL WITH SURFACE S1 TO WITHIN 10 ARCSEC
- 3. COATING (APPLY ACROSS CLEAR APERTURE)
PHYSICAL DURABILITY: MIL-C-48497A
ENVIRONMENTAL DURABILITY: MIL-STD-810F
Tabs $\geq 93\%$ @ 364 - 400nm
- 4. FINE GROUND SURFACE
- 5. POWER, IRREGULARITY, AND SURFACE QUALITY SPECIFICATIONS APPLY
ACROSS CLEAR APERTURE
- 6. TRANSMITTED WAVEFRONT DISTORTION RMS @ $< \lambda/4$ @ 633nm
- 7. RoHS COMPLIANT

**FOR INFORMATION ONLY:
DO NOT MANUFACTURE
PARTS TO THIS DRAWING**




SPECIFICATIONS SUBJECT TO CHANGE WITHOUT NOTICE
DIMENSIONS ARE FOR REFERENCE ONLY

REV. A	S1	S2
SHAPE	PLANO	PLANO
SURFACE QUALITY	60-40	60-40
CLEAR APERTURE	>80%	>80%
BEVEL	PROTECTIVE AS NEEDED	PROTECTIVE AS NEEDED

THIRD ANGLE
PROJECTION

ALL DIMS IN mm

 **Edmund Optics®**

TITLE	Ø25mm, 358.6nm, RAMAN EDGE FILTER		
DWG NO	86235	SHEET 1 OF 1	