

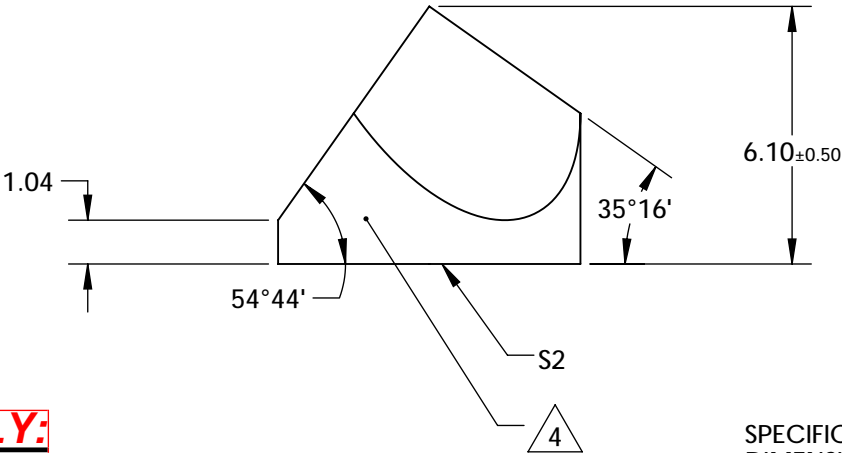
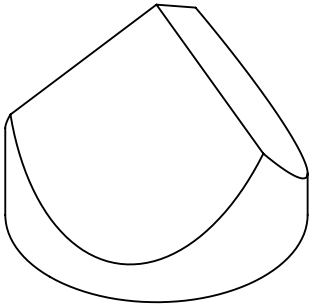
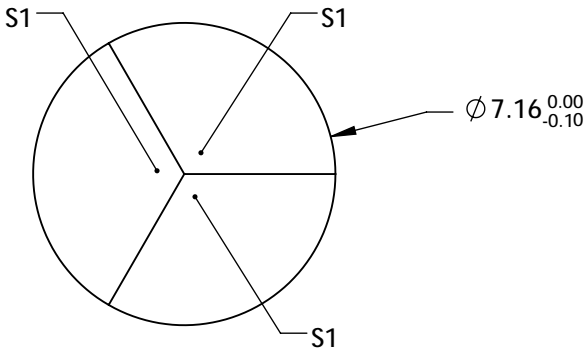
NOTES:

- 1. SUBSTRATE:
N-BK7
- 2. INCIDENT AND REFLECTED BEAMS SHALL BE PARALLEL TO WITHIN 10 ARCSEC
- 3. COATING (APPLY ACROSS COATING APERTURE)
S1: Silver w/Protected Overcoat (Black Overpaint)
R(ABS) > 97% FROM 400 - 2500nm @ 0° AOI
R(AVG) > 98% FROM 400 - 2500nm @ 0° AOI
S2: NONE

4. FINE GRIND SURFACE

5. ROHS: COMPLIANT

Note: Protective Overcoat Increases diameter by 30-60µm



**FOR INFORMATION ONLY:
DO NOT MANUFACTURE
PARTS TO THIS DRAWING**

SPECIFICATIONS SUBJECT TO CHANGE WITHOUT NOTICE
DIMENSIONS ARE FOR REFERENCE ONLY

REV A	S1 & S2
SURFACE FLATNESS	$\lambda/8$
SURFACE QUALITY	60-40
WAVELENGTH RANGE	400 - 2200 nm
BEVEL	PROTECTED AS NEEDED



ALL DIMS IN

mm

EO® Edmund Optics®

TITLE

7.16mm SILVER COATED, CORNER CUBE
PRISM

DWG NO

43305

SHEET
1 OF 1