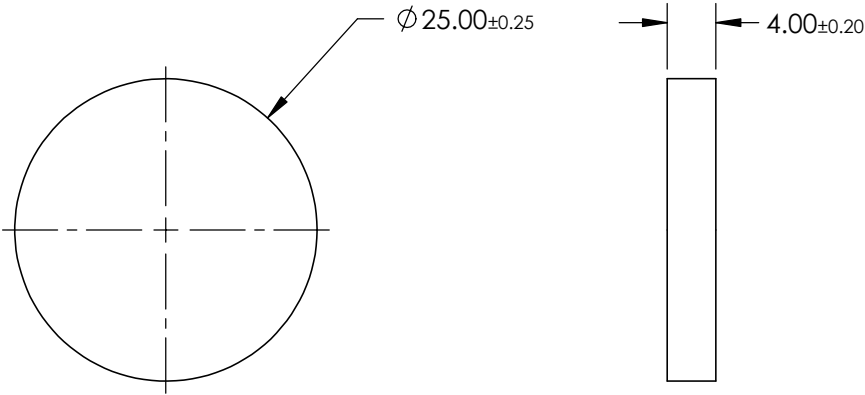
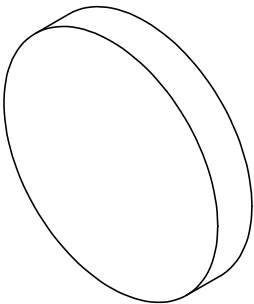


- NOTES:
- 1. SUBSTRATE:
 - 2. SURFACE S2 TO BE PARALLEL WITH S1 TO WITHIN <1 ARCMIN
 - 3. COATING (APPLY ACROSS CLEAR APERTURE)
PERFORMANCE SPECIFICATIONS:
R{ABS} = 50% @ 510nm; R{AVG} > 98% @ 400 - 475nm
S1: MULTI-LAYER DICHROIC
S2: SINGLE LAYER MgF2
 - 4. FINE GRIND SURFACE
 - 5. POWER, IRREGULARITY, AND SURFACE QUALITY
SPECIFICATIONS APPLY ACROSS CLEAR APERTURE
 - 6. ROHS COMPLIANT

FOR INFORMATION ONLY:
DO NOT MANUFACTURE
PARTS TO THIS DRAWING



SPECIFICATIONS SUBJECT TO CHANGE WITHOUT NOTICE
DIMENSIONS ARE FOR REFERENCE ONLY

	S1	S2
SHAPE	PLANO	PLANO
CUT-OFF WAVELENGTH	510nm	510nm
SURFACE QUALITY	60-40	60-40
SURFACE FLATNESS	$\lambda/4$	$\lambda/4$
COATING TYPE	TRADITIONAL COATED	TRADITIONAL COATED
BEVEL	PROTECTED AS NEEDED	PROTECTED AS NEEDED

THIRD ANGLE
PROJECTION

ALL DIMS IN mm

 **Edmund Optics®**

TITLE	Ø25mm, 45° BLUE DICHROIC FILTER		
DWG NO	47267	SHEET 1 OF 1	