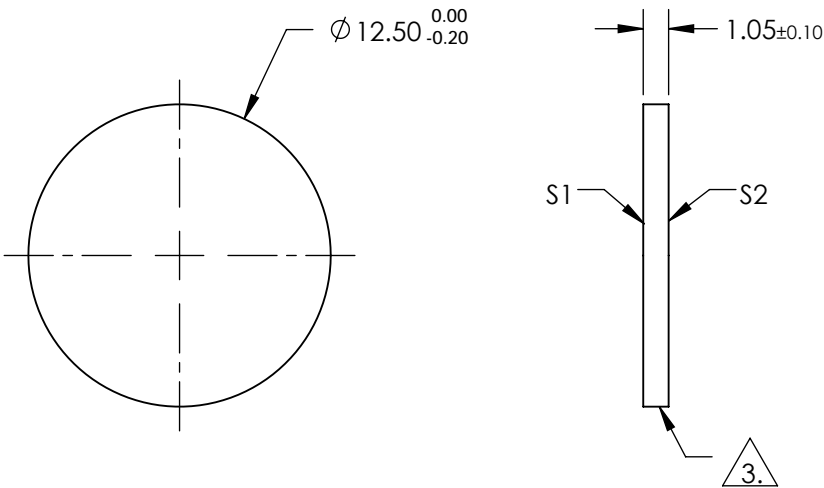
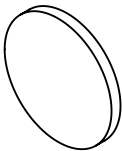


NOTES:

- 1. SUBSTRATE
UV GRADE FUSED SILICA
- 2. COATING (APPLY ACROSS CLEAR APERTURE)
HARD COATED
PERFORMANCE SPECS:
T(AVG) = 90% FROM 520 - 850nm @ 45 ° AOI
R(AVG) = 98% FROM 350 - 510nm @ 45 ° AOI
T(ABS) = 50% @ 516nm @ 45 ° AOI

3. FINE GRIND SURFACE

- 4. SURFACE QUALITY SPECIFICATIONS APPLY ACROSS CLEAR APERTURE
- 5. TRANSMITTED WAVEFRONT DISTORTION RMS @ 632.8nm ≤1λ
- 6. ROHS COMPLIANT



**FOR INFORMATION ONLY:
DO NOT MANUFACTURE
PARTS TO THIS DRAWING**

SPECIFICATIONS SUBJECT TO CHANGE WITHOUT NOTICE
DIMENSIONS ARE FOR REFERENCE ONLY

	S1	S2
SHAPE	PLANO	PLANO
SURFACE QUALITY	60-40	60-40
CLEAR APERTURE	Ø11.00	Ø11.00
BEVEL	PROTECTIVE AS NEEDED	PROTECTIVE AS NEEDED

THIRD ANGLE PROJECTION

ALL DIMS INmm

Edmund Optics®

TITLE

516nm, 12.5mm DIAMETER, DICHROIC FILTER

DWG NO

86312

SHEET

1 OF 1