
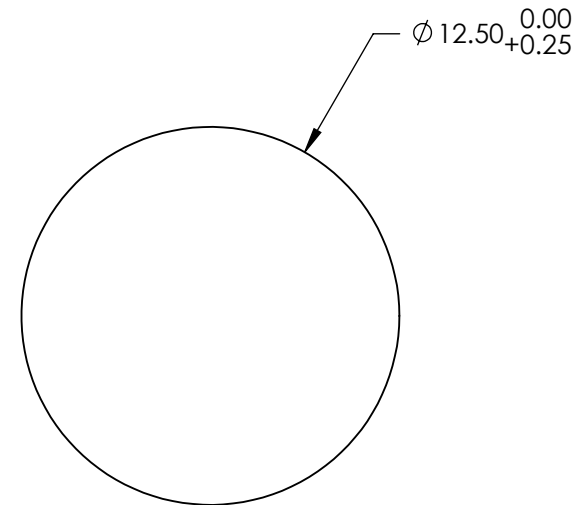
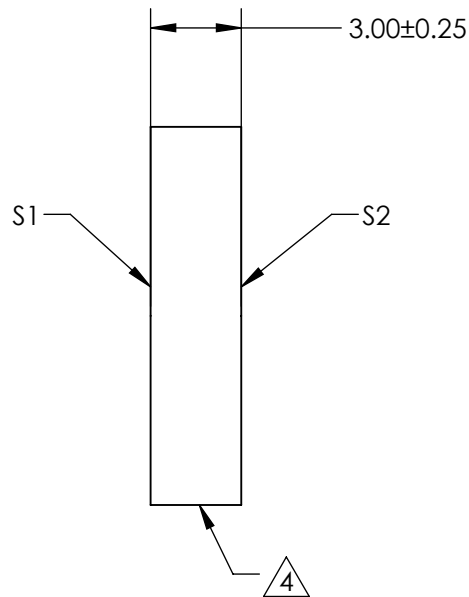


- NOTES:
- 1. SUBSTRATE:
N-BK7
 - 2. SURFACE S2 TO BE PARALLEL WITH SURFACE S1 TO WITHIN ≤ 3 ARCMIN
 - 3. COATING (APPLY ACROSS CLEAR APERTURE)


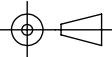
S1: 70% R $\pm 5\%$ @ 900nm
30% T $\pm 5\%$ @ 900nm

S2: AR R(avg) $\leq 1\%$, R(abs) $\leq 2\%$ @ 700 - 1100nm
 - 4.  CUT WITH 0.25mm MAXIMUM EDGE CHIP
 - 5. ROHS COMPLIANT



**FOR INFORMATION ONLY:
DO NOT MANUFACTURE
PARTS TO THIS DRAWING**

SPECIFICATIONS SUBJECT TO CHANGE WITHOUT NOTICE
DIMENSIONS ARE FOR REFERENCE ONLY

| | | | | | | | |
|--------------------|--|-------------|-------------|--|--------|--|------------------|
| | | S1 | S2 |  Edmund Optics® | | | |
| SHAPE | | PLANO | PLANO |  | TITLE | 12.5mm Dia 70R/30T, NIR Plate Beamsplitter | |
| ANGLE OF INCIDENCE | | 45° | 45° | | | | |
| SURFACE QUALITY | | 60 - 40 | 60 - 40 | | | | |
| SURFACE FLATNESS | | 1λ PER 25mm | 1λ PER 25mm | | DWG NO | 48395 | SHEET 5 OF 14 |
| | | | | ALL DIMS IN | mm | | |