

NOTES:

1. SUBSTRATE MATERIAL: BOROFLOAT®

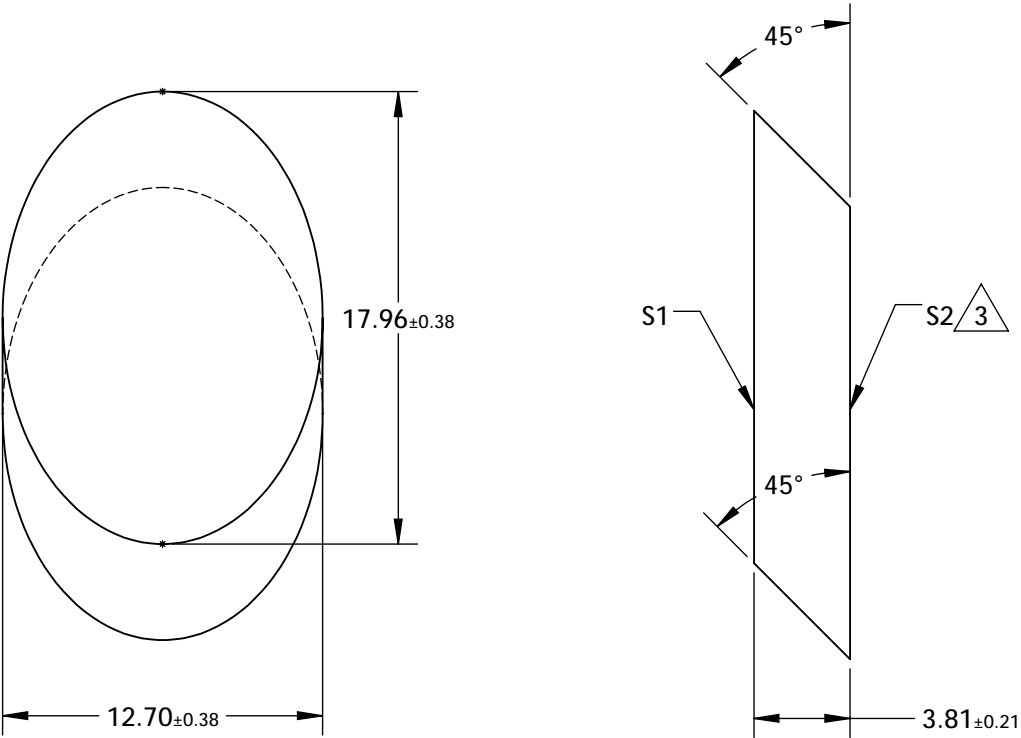
2. COATING (APPLY ACROSS CLEAR APERTURE)

S1: R(AVG) >85% @ 400 - 700nm
R(AVG) >90% @ 400 - 2000nm

S2: NONE



3. FINE GRIND SURFACE

4. RoHS COMPLIANT



FOR INFORMATION ONLY:
DO NOT MANUFACTURE
PARTS TO THIS DRAWING

SPECIFICATIONS SUBJECT TO CHANGE WITHOUT NOTICE
DIMENSIONS ARE FOR REFERENCE ONLY

	S1	S2			 Edmund Optics®		
TYPE	PLANO	PLANO					
CLEAR APERTURE (mm)	16.15 x 11.43	N/A	TITLE				
SURFACE QUALITY	60-40	N/A				12.7mm, MINOR AXIS PROTECTED ALUM. ELLIPTICAL MIRROR	
SURFACE FLATNESS	$\lambda/8$	N/A	DWG NO				
BEVEL	PROTECTIVE AS NEEDED	PROTECTIVE AS NEEDED				32271	
			SHEET 1 OF 1				