

NOTES:

1. SUBSTRATE MATERIAL: BOROFLOAT®/SUPREMAX®

2. PARABOLIC SURFACE:

$Z=Y^2/[4 * EFL]$

3. COATING (APPLY ACROSS CLEAR APERTURE)

S1: ENHANCED ALUMINUM
R(avg) >95% @ 450 - 650nm
S2: NONE

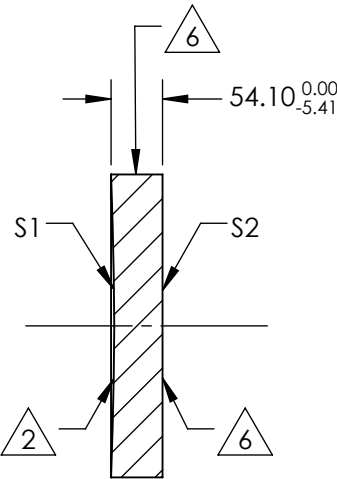
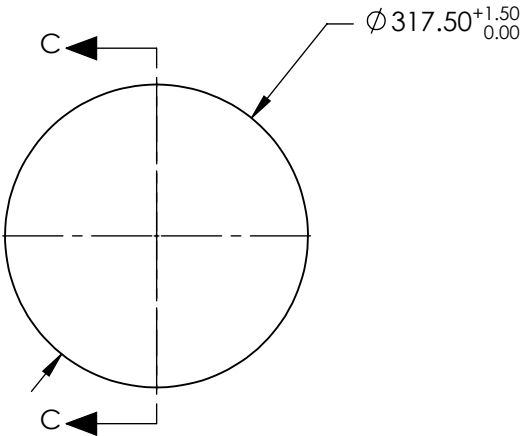
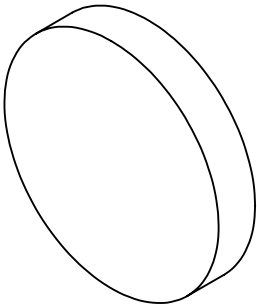
4. EDGES: MOLDED EDGE ACCEPTABLE

5. POWER, IRREGULARITY, SURFACE QUALITY AND COATING
SPECIFICATIONS APPLY ACROSS CLEAR APERTURE

6. FINE GRIND SURFACE

7. RoHS COMPLIANT

**FOR INFORMATION ONLY:
DO NOT MANUFACTURE
PARTS TO THIS DRAWING**



SECTION C-C

SPECIFICATIONS SUBJECT TO CHANGE WITHOUT NOTICE
DIMENSIONS ARE FOR REFERENCE ONLY

	S1	S2
SHAPE	CONCAVE	PLANO
EFFECTIVE FOCAL LENGTH	1905	N/A
FOCAL LENGTH TOLERANCE	±1.5%	N/A
SURFACE QUALITY	60-40	FINE GRIND
SURFACE FLATNESS	λ/8	N/A
BEVEL	PROTECTIVE AS NEEDED	PROTECTIVE AS NEEDED

Edmund Optics®



ALL DIMS IN

mm

TITLE

12.5" Diameter x 75" FL Enhanced Aluminum,
Parabolic Mirror

DWG NO

32276533

SHEET
1 OF 1