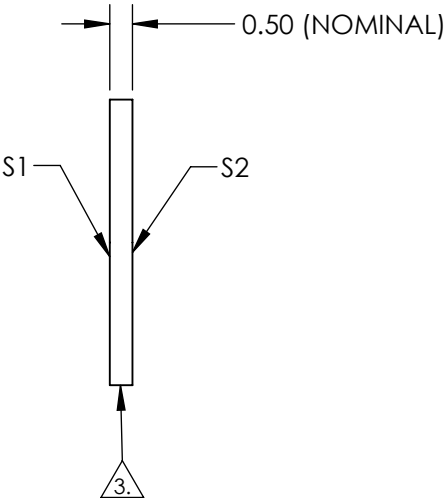
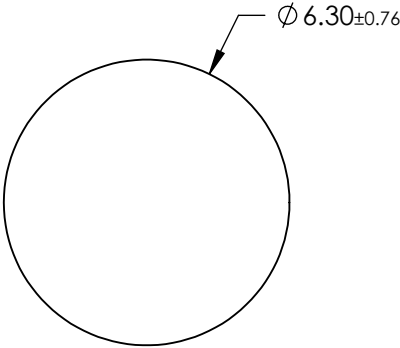




NOTES:

- 1. SUBSTRATE: Float Glass
- 2. COATING (APPLY ACROSS CLEAR APERTURE)
 - S1: Protected Aluminum (400-700nm)
 - R(AVG) >85% @ 400 - 700nm @ 45°
 - S2: NONE
- 3. GROUND EDGES
- 4. RoHS COMPLIANT



FOR INFORMATION ONLY:
DO NOT MANUFACTURE
PARTS TO THIS DRAWING

SPECIFICATIONS SUBJECT TO CHANGE WITHOUT NOTICE
DIMENSIONS ARE FOR REFERENCE ONLY

	S1	S2	 Edmund Optics®			
SHAPE	PLANO	PLANO		TITLE	6.3mm Diameter, 4-6λ Mirror	
SURFACE QUALITY	80-50	N/A		DWG NO	32354	SHEET 1 OF 1
SURFACE FLATNESS	4 - 6λ	N/A				
CLEAR APERTURE	Ø 5.67	N/A				
BEVEL	PROTECTED AS NEEDED	PROTECTED AS NEEDED	ALL DIMS IN	mm		