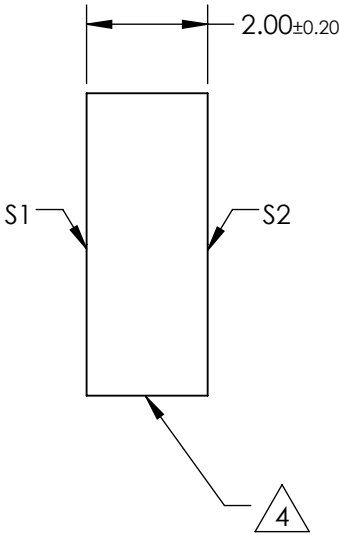
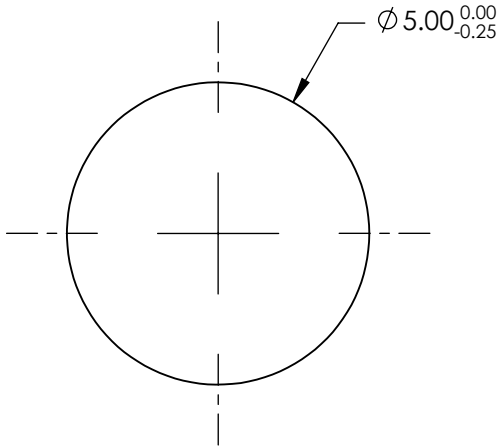
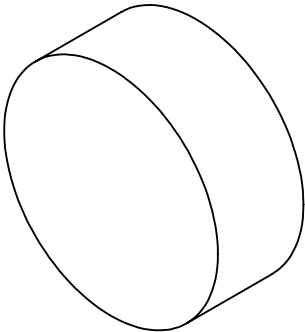


NOTES:

- 1. SUBSTRATE:
N-BK7
- 2. S2 TO BE PARALLEL WITH S1 TO <1 ARCMIN
- 3. COATING (APPLY ACROSS CLEAR APERTURE)
S1 & S2: RAVG ≤0.4% @ 425 - 675nm
- 4. FINE GRIND SURFACE
- 5. RoHS COMPLIANT
- 6. SURFACE FLATNESS (P-V):
λ/4 (per inch over clear aperture)



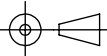
**FOR INFORMATION ONLY:
DO NOT MANUFACTURE
PARTS TO THIS DRAWING**

SPECIFICATIONS SUBJECT TO CHANGE WITHOUT NOTICE
DIMENSIONS ARE FOR REFERENCE ONLY

Edmund Optics®

	S1	S2
SHAPE	PLANO	PLANO
SURFACE QUALITY	60-40	60-40
CLEAR APERTURE	Ø4.00	Ø4.00
BEVEL	PROTECTIVE AS NEEDED	PROTECTIVE AS NEEDED

THIRD ANGLE
PROJECTION



ALL DIMS IN

mm

TITLE

5mm DIA., 2mm THICK, VIS 0° COATED λ/4
N-BK7 WINDOW

DWG NO

47515

SHEET
1 OF 1