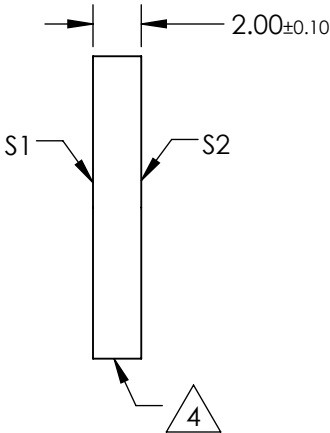
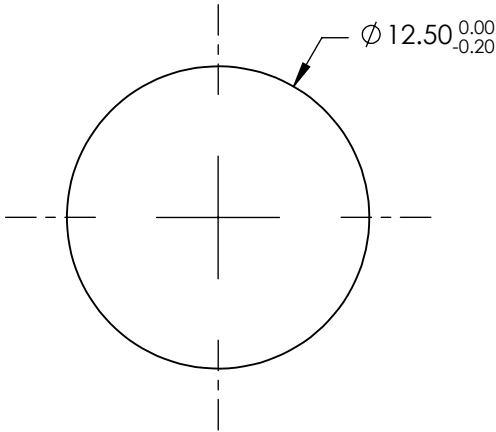
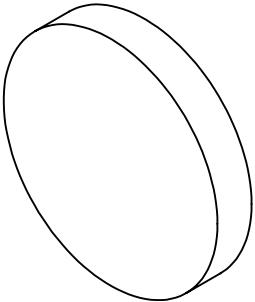


NOTES:

1. SUBSTRATE:UV GRADE FUSED SILICA
2. COATING (APPLY ACROSS CLEAR APERTURE)
S1 & S2: RABS $\leq 0.25\%$ @ 880nm
RAVG $\leq 1.25\%$ @ 400 - 870nm
RAVG $\leq 1.25\%$ @ 890 - 1000nm
3. SURFACE S2 TO BE PARALLEL WITH S1 TO <5 ARCSEC


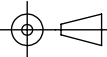
4. FINE GRIND SURFACE

5. RoHS COMPLIANT



**FOR INFORMATION ONLY:
DO NOT MANUFACTURE
PARTS TO THIS DRAWING**

SPECIFICATIONS SUBJECT TO CHANGE WITHOUT NOTICE
DIMENSIONS ARE FOR REFERENCE ONLY

	S1	S2	 Edmund Optics®			
SHAPE	PLANO	PLANO		TITLE	12.5mm DIA., 2mm THICK, VIS-NIR COATED λ/10 FUSED SILICA WINDOWS	
SURFACE QUALITY	20-10	20-10		DWG NO	84452	SHEET 1 OF 1
CLEAR APERTURE	Ø10.00	Ø10.00				
BEVEL	PROTECTIVE AS NEEDED	PROTECTIVE AS NEEDED				
			ALL DIMS IN	mm		