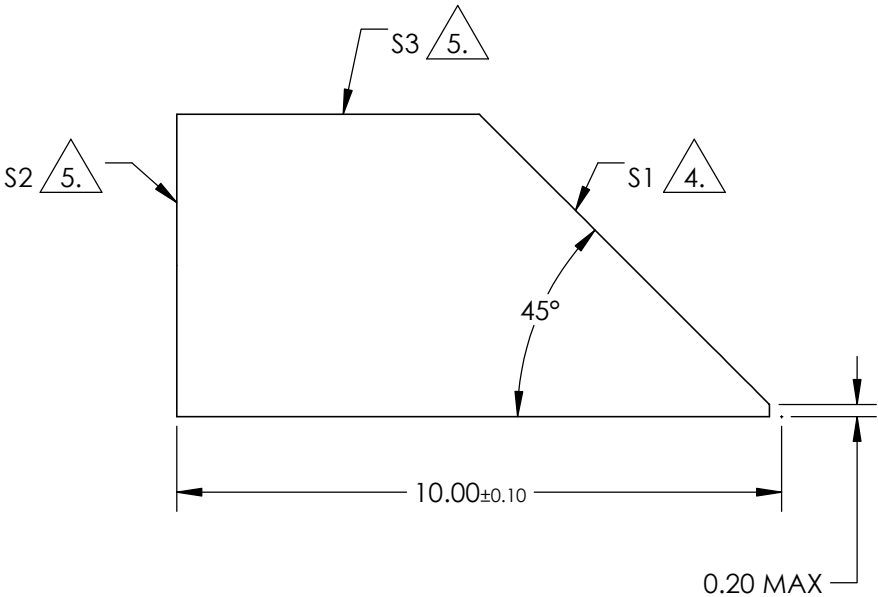
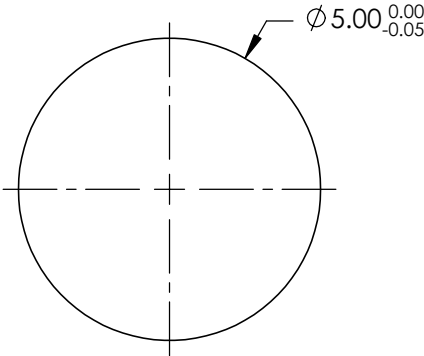


NOTES:

- 1. SUBSTRATE: N-BK7
- 2. COATING
 - S1: PROTECTED ALUMINUM
 - R(avg) >85% @ 400 - 700nm
 - DENSITY LIMIT : 0.3 J/cm² @ 532nm & 1064nm, 10ns
 - S2: UNCOATED
 - S3: UNCOATED
- 3. RoHS COMPLIANT

4. POLISHED SURFACE


5. FINE GRIND SURFACE



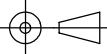
**FOR INFORMATION ONLY:
DO NOT MANUFACTURE
PARTS TO THIS DRAWING**

SPECIFICATIONS SUBJECT TO CHANGE WITHOUT NOTICE
DIMENSIONS ARE FOR REFERENCE ONLY

REV. A	S1	S2, S3
ANGLE TOLERANCE (arcmin)	±10	±10
WAVELENGTH RANGE (nm)	400 - 700	N/A
SURFACE QUALITY	40-20	N/A
BEVEL	PROTECTIVE AS NEEDED	PROTECTIVE AS NEEDED



THIRD ANGLE PROJECTION



ALL DIMS IN

mm

TITLE

Ø5mm, 45°, ALUMINUM COATED, ROD LENS

DWG NO

54098

SHEET

1 OF 1