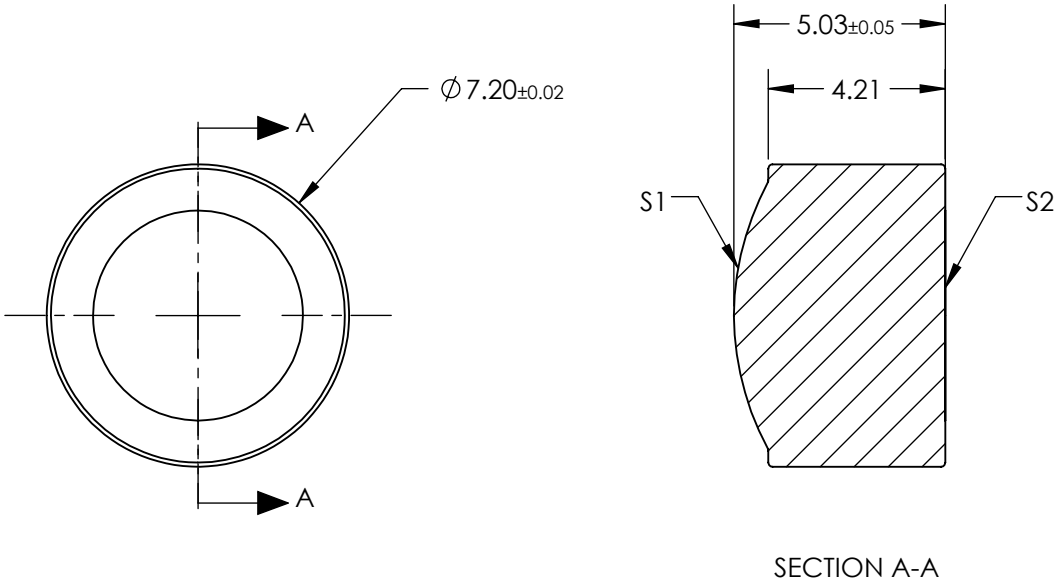



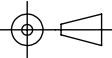
NOTES:

- 1. SUBSTRATE:  
ECO 550
- 2. NUMERICAL APERTURE: .25
- 3. COATING  
S1 & S2: SINGLE LAYER MgF2 @ 775nm
- 4. FOCAL LENGTH TOLERANCE: ±1%
- 5. TRANSMITTED WAVEFRONT ERROR (λ, RMS): < 0.040



**FOR INFORMATION ONLY:  
DO NOT MANUFACTURE  
PARTS TO THIS DRAWING**

SPECIFICATIONS SUBJECT TO CHANGE WITHOUT NOTICE DIMENSIONS ARE FOR REFERENCE ONLY

	S1	S2	EFL	11.00	 <b>Edmund Optics®</b>		
			BFL	7.91			
SHAPE	CONVEX	PLANO	THIRD ANGLE PROJECTION 	TITLE	0.25 NA 11.00mm FL MgF2 AR COATED, MOLDED ASPHERIC LENS		
SURFACE QUALITY	40-20	40-20					
CLEAR APERTURE	Ø5.50	Ø5.50					
BEVEL MAX	PROTECTIVE AS NEEDED	PROTECTIVE AS NEEDED	ALL DIMS IN	mm	DWG NO	46358	SHEET 1 OF 1