

NOTES:

1. SUBSTRATE: Float Glass
2. COATING SPECIFICATION:

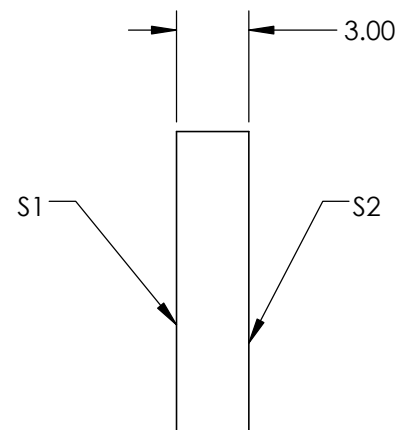
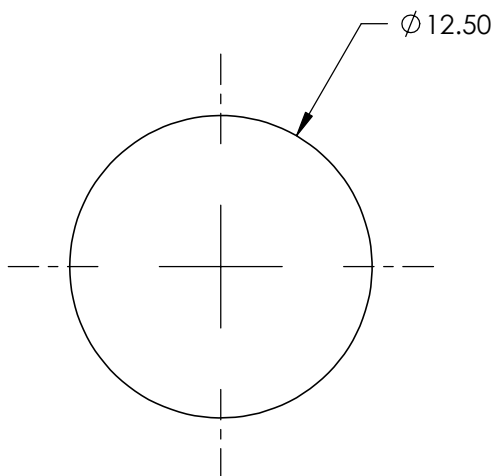
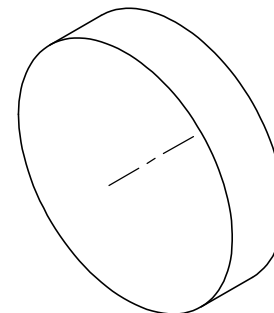
VIS Laser
S1: R(abs) >97% @ 633nm

S2: 0

- ### 3. POWER, IRREGULARITY, AND SURFACE QUALITY SPECIFICATIONS APPLY ACROSS CLEAR APERTURE


- #### 4. ROHS COMPLIANT

**FOR INFORMATION ONLY:
DO NOT MANUFACTURE
PARTS TO THIS DRAWING**



SPECIFICATIONS SUBJECT TO CHANGE WITHOUT NOTICE
DIMENSIONS ARE FOR REFERENCE ONLY

 Edmund Optics®

	S1	S2	THIRD ANGLE PROJECTION 		TITLE	12.5mm Diameter Laser Diode Mirror	
SHAPE	PLANO	PLANO					
SURFACE QUALITY	80-50	COMMERCIAL POLISH	ALL DIMS IN	mm	DWG NO	46618	SHEET 1 OF 1
BEVEL	PROTECTIVE AS NEEDED	PROTECTIVE AS NEEDED					