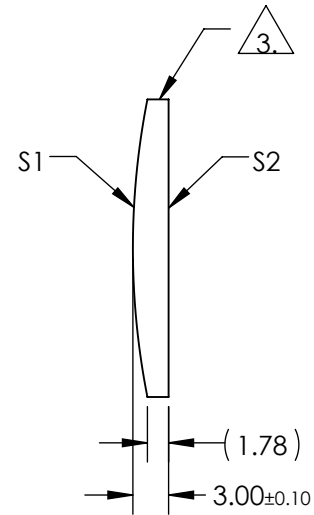
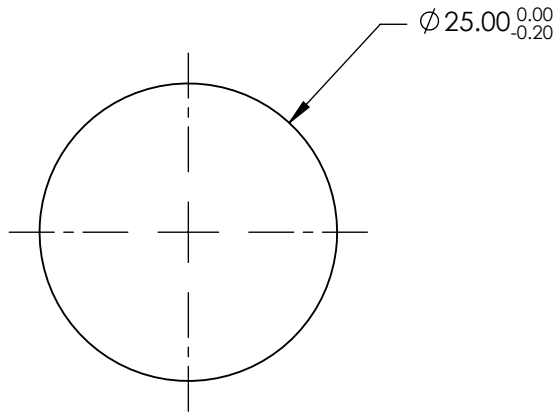


NOTES:

1. SUBSTRATE MATERIAL:
N-BK7
2. COATING (APPLY ACROSS CLEAR APERTURE)
- S1 & S2: MgF2 (400-700nm)
R(AVG) ≤1.75% @ 400 - 700nm
3. FINE GROUND SURFACE
4. RoHS COMPLIANT



**FOR INFORMATION ONLY:
DO NOT MANUFACTURE
PARTS TO THIS DRAWING**

SPECIFICATIONS SUBJECT TO CHANGE WITHOUT NOTICE
DIMENSIONS ARE FOR REFERENCE ONLY

	S1	S2	EFL	125.00	 Edmund Optics®			
SHAPE	CONVEX	PLANO	BFL	123.02				
RADIUS	64.60	INFINITY			TITLE	25mm DIA X 125mm FL MGF2 COATED, CYLINDER LENS		
SURFACE QUALITY	60-40	60-40						
CLEAR APERTURE	Ø24.00	Ø24.00			DWG NO	48361		
BEVEL	PROTECTIVE AS NEEDED	PROTECTIVE AS NEEDED						
			ALL DIMS IN	mm				
					SHEET 1 OF 1			