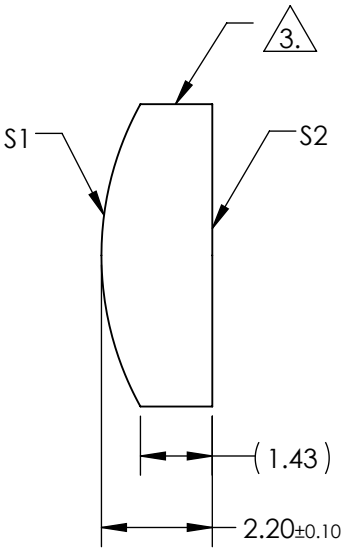
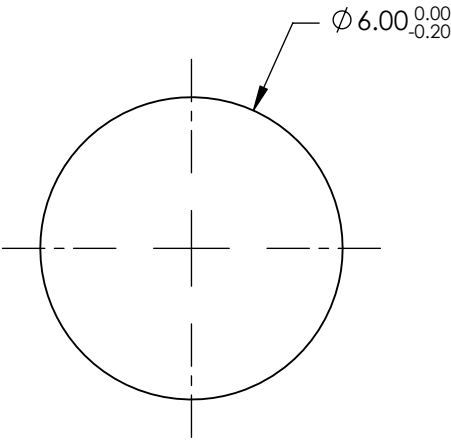


NOTES:

1. SUBSTRATE MATERIAL:
N-BK7
2. COATING (APPLY ACROSS CLEAR APERTURE)
- S1 & S2: MgF2 (400-700nm)
R(AVG) ≤1.75% @ 400 - 700nm
3. FINE GROUND SURFACE
4. RoHS COMPLIANT



**FOR INFORMATION ONLY:
DO NOT MANUFACTURE
PARTS TO THIS DRAWING**

SPECIFICATIONS SUBJECT TO CHANGE WITHOUT NOTICE
DIMENSIONS ARE FOR REFERENCE ONLY

	S1	S2	EFL	12.00	 Edmund Optics®		
SHAPE	CONVEX	PLANO	BFL	10.55			
RADIUS	10.55	INFINITY			TITLE	6mm DIA X 12mm FL MGF2 COATED, CYLINDER LENS	
SURFACE QUALITY	60-40	60-40					
CLEAR APERTURE	Ø5.40	Ø5.40			DWG NO	68040	
BEVEL	PROTECTIVE AS NEEDED	PROTECTIVE AS NEEDED					
			ALL DIMS IN	mm			
						SHEET 1 OF 1	