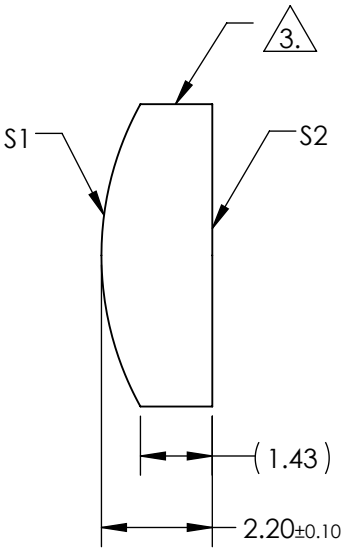
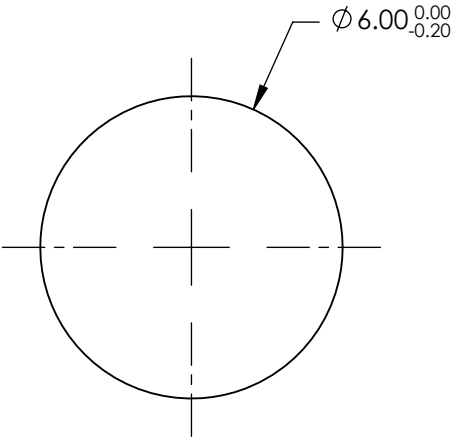


NOTES:

1. SUBSTRATE MATERIAL:
N-BK7
2. COATING (APPLY ACROSS CLEAR APERTURE)
- S1 & S2: NIR I (600-1050nm)
R(AVG) ≤0.5% @ 600 - 1050nm

3. FINE GROUND SURFACE

4. RoHS COMPLIANT



**FOR INFORMATION ONLY:
DO NOT MANUFACTURE
PARTS TO THIS DRAWING**

SPECIFICATIONS SUBJECT TO CHANGE WITHOUT NOTICE
DIMENSIONS ARE FOR REFERENCE ONLY

	S1	S2	EFL	12.00	 Edmund Optics®			
SHAPE	CONVEX	PLANO	BFL	10.55				
RADIUS	6.20	INFINITY			TITLE	6mm DIA X 12mm FL NIR I COATED, CYLINDER LENS		
SURFACE QUALITY	60-40	60-40						
CLEAR APERTURE	Ø5.40	Ø5.40	ALL DIMS IN		mm	DWG NO	69740	SHEET 1 OF 1
BEVEL	PROTECTIVE AS NEEDED	PROTECTIVE AS NEEDED						