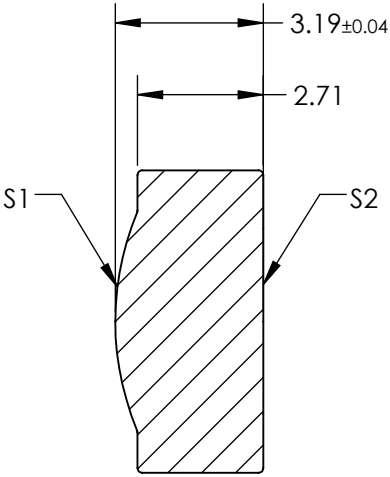
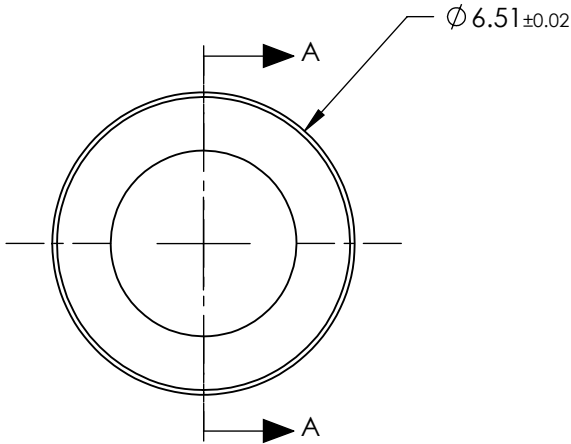


NOTES:

- 1. SUBSTRATE:  
D-ZLAF52LA
- 2. NUMERICAL APERTURE: 0.30
- 3. COATING  
S1 & S2: R(ABS) < 1.0% @ 1050 - 1600nm
- 4. FOCAL LENGTH TOLERANCE: ±1%
- 5. TRANSMITTED WAVEFRONT ERROR (λ, RMS): < 0.050


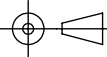


SECTION A-A

**FOR INFORMATION ONLY:  
DO NOT MANUFACTURE  
PARTS TO THIS DRAWING**

SPECIFICATIONS SUBJECT TO CHANGE WITHOUT NOTICE DIMENSIONS ARE FOR REFERENCE ONLY

	S1	S2
SHAPE	CONVEX	PLANO
SURFACE QUALITY	40-20	40-20
CLEAR APERTURE	$\varnothing 4.54$	$\varnothing 4.54$
BEVEL MAX	PROTECTIVE AS NEEDED	PROTECTIVE AS NEEDED

EFL	7.50	 <b>Edmund Optics®</b>		
BFL	5.82			
THIRD ANGLE PROJECTION		TITLE	0.30 NA 7.50mm FL 1050-1600nm AR COATED, MOLDED ASPHERIC LENS	
ALL DIMS IN	mm	DWG NO	87131	SHEET 1 OF 1