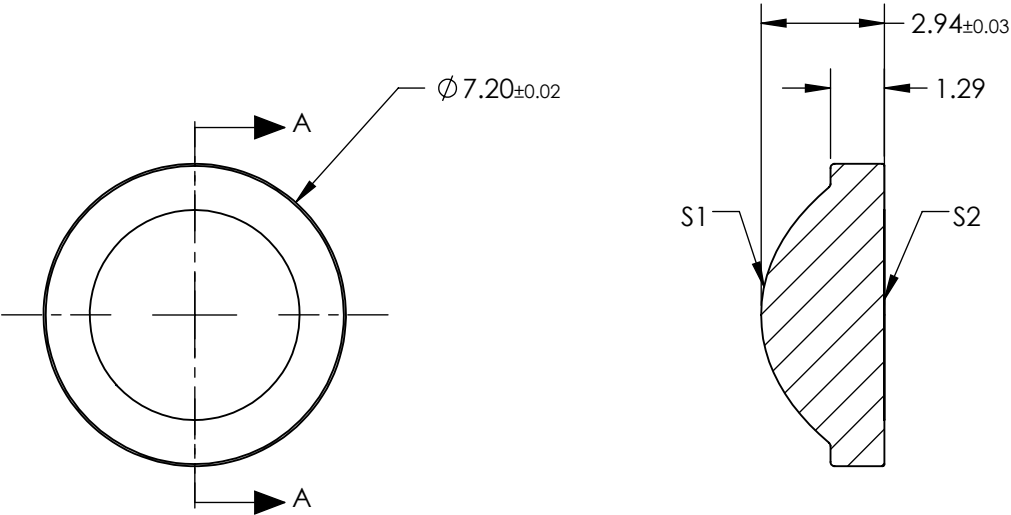


NOTES:

- 1. SUBSTRATE:  
D-ZK3
- 2. NUMERICAL APERTURE: 0.56
- 3. COATING  
S1 & S2: R(AVG) ≤ 0.5% @ 350 - 700nm
- 4. FOCAL LENGTH TOLERANCE: ±1%
- 5. TRANSMITTED WAVEFRONT ERROR (λ, RMS): < 0.071



SECTION A-A

**FOR INFORMATION ONLY:  
DO NOT MANUFACTURE  
PARTS TO THIS DRAWING**

SPECIFICATIONS SUBJECT TO CHANGE WITHOUT NOTICE DIMENSIONS ARE FOR REFERENCE ONLY			EFL	5.50	 <b>Edmund Optics®</b>	
			BFL	3.73		
SHAPE	S1 CONVEX	S2 PLANO			TITLE	0.56 NA 5.50mm FL 350-700nm AR COATED, MOLDED ASPHERIC LENS
SURFACE QUALITY	40-20	40-20				
CLEAR APERTURE	Ø6.00	Ø6.00	ALL DIMS IN	mm	DWG NO	87145
BEVEL MAX	PROTECTIVE AS NEEDED	PROTECTIVE AS NEEDED				SHEET 1 OF 1