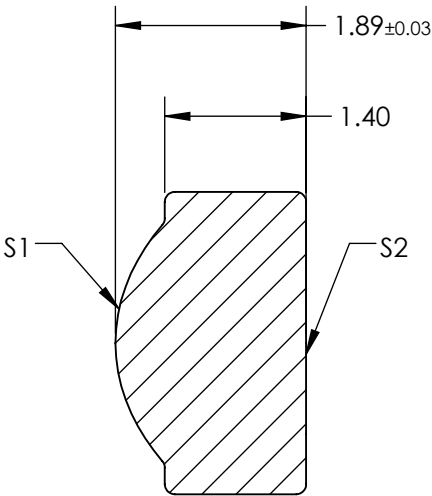
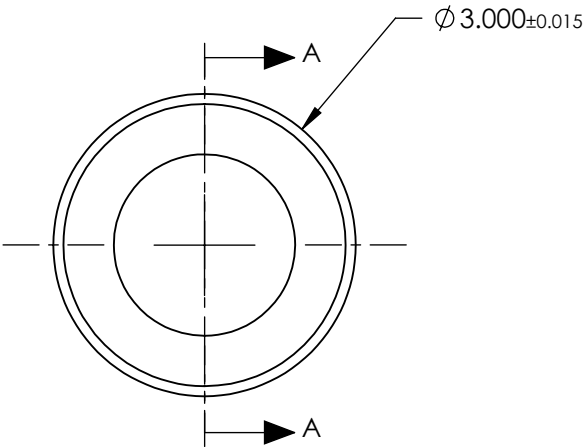


NOTES:

- 1. SUBSTRATE:  
D-ZLAF52LA
- 2. NUMERICAL APERTURE: 0.5
- 3. COATING  
S1 & S2: R(AVG) ≤ 0.5% @ 350 - 700nm
- 4. FOCAL LENGTH TOLERANCE: ±1%
- 5. TRANSMITTED WAVEFRONT ERROR (λ, RMS): < 0.070


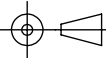


SECTION A-A

**FOR INFORMATION ONLY:  
DO NOT MANUFACTURE  
PARTS TO THIS DRAWING**

SPECIFICATIONS SUBJECT TO CHANGE WITHOUT NOTICE DIMENSIONS ARE FOR REFERENCE ONLY

	S1	S2
SHAPE	CONVEX	PLANO
SURFACE QUALITY	40-20	40-20
CLEAR APERTURE	Ø2.00	Ø2.00
BEVEL MAX	PROTECTIVE AS NEEDED	PROTECTIVE AS NEEDED

EFL	2.00	 <b>Edmund Optics®</b>	
BFL	1.03		
THIRD ANGLE PROJECTION		TITLE	0.50 NA 2.00mm FL 350-700nm AR COATED, MOLDED ASPHERIC LENS
ALL DIMS IN	mm	DWG NO	83582
			SHEET 1 OF 1