

NOTES:

- 1. SUBSTRATE MATERIAL:
N-BK7
- 2. COATING (APPLY ACROSS CLEAR APERTURE)

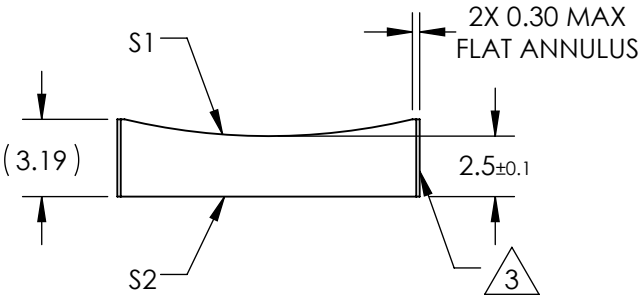
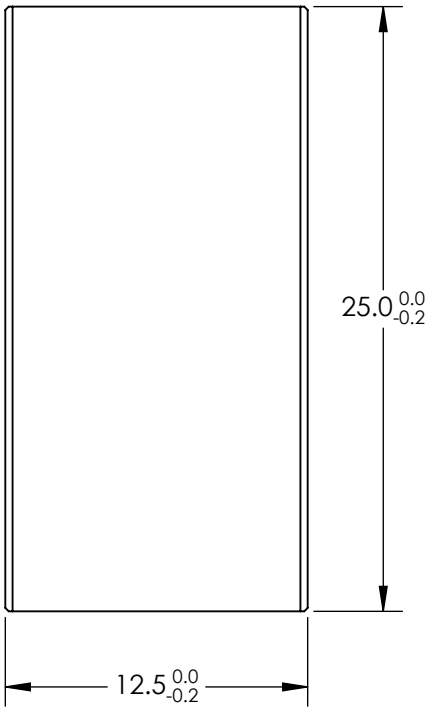
S1 & S2: VIS 0°

R(avg) ≤0.4% @ 425 - 675nm


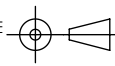
3. FINE GROUND SURFACE

- 4. POWER, IRREGULARITY, AND SURFACE QUALITY
SPECIFICAIONS APPLY ACROSS CLEAR APERTURE
- 5. RoHS COMPLIANT

**FOR INFORMATION ONLY:
DO NOT MANUFACTURE
PARTS TO THIS DRAWING**



SPECIFICATIONS SUBJECT TO CHANGE WITHOUT NOTICE
DIMENSIONS ARE FOR REFERENCE ONLY

REV. A	S1	S2	 Edmund Optics®						
SHAPE	CONVEX	PLANO						EFL	-50
RADIUS	25.84	∞						BFL	-51.65
SURFACE QUALITY	60-40	60-40			TITLE	12.5mm H X 25mm L X -50mm FL VIS 0° COATED, CYLINDER LENS			
CLEAR APERTURE	11.50 X 24.00	11.50 X 24.00							
COATING APERTURE	11.50 X 24.00	11.50 X 24.00							
BEVEL	PROTECTED AS NEEDED	PROTECTED AS NEEDED	ALL DIMS IN	mm	DWG NO	69799	SHEET 1 OF 1		