

NOTES:

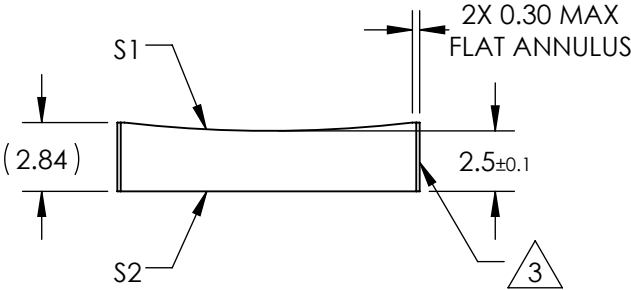
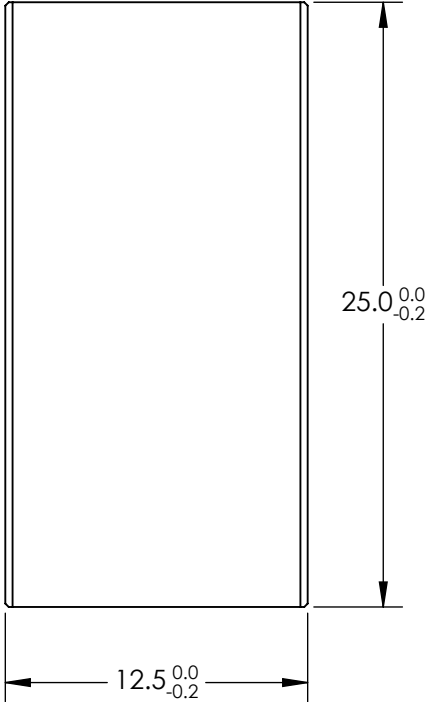
- 1. SUBSTRATE MATERIAL:
N-BK7
- 2. COATING (APPLY ACROSS CLEAR APERTURE)

S1 & S2: VIS 0°


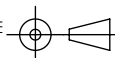
R(avg) ≤0.4% @ 425 - 675nm

- 3. FINE GROUND SURFACE
- 4. POWER, IRREGULARITY, AND SURFACE QUALITY
SPECIFICAIONS APPLY ACROSS CLEAR APERTURE
- 5. RoHS COMPLIANT

**FOR INFORMATION ONLY:
DO NOT MANUFACTURE
PARTS TO THIS DRAWING**



SPECIFICATIONS SUBJECT TO CHANGE WITHOUT NOTICE
DIMENSIONS ARE FOR REFERENCE ONLY

| | | | | | | |
|------------------|---------------------|---------------------|--|------|-----------------|---|
| REV. A | S1 | S2 |  Edmund Optics® | | | |
| SHAPE | CONVEX | PLANO | | | | |
| RADIUS | 51.68 | ∞ | EFL | -100 | BFL | -101.65 |
| SURFACE QUALITY | 60-40 | 60-40 |  | | TITLE | 12.5mm H X 25mm L X -100mm FL VIS 0° COATED, CYLINDER LENS |
| CLEAR APERTURE | 11.50 X 24.00 | 11.50 X 24.00 | | | | |
| COATING APERTURE | 11.50 X 24.00 | 11.50 X 24.00 | | | | |
| BEVEL | PROTECTED AS NEEDED | PROTECTED AS NEEDED | ALL DIMS IN | mm | DWG NO | 69801 |
| | | | | | SHEET 1 OF 1 | |