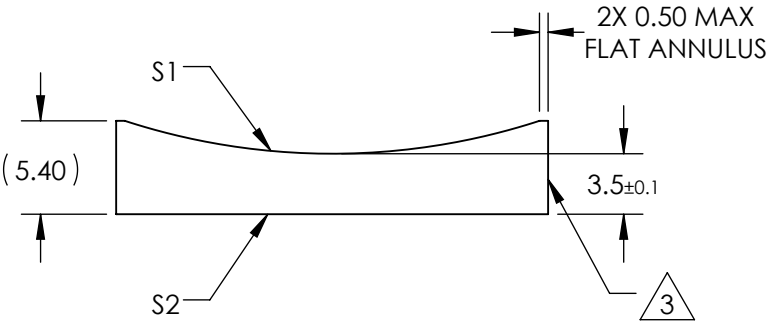
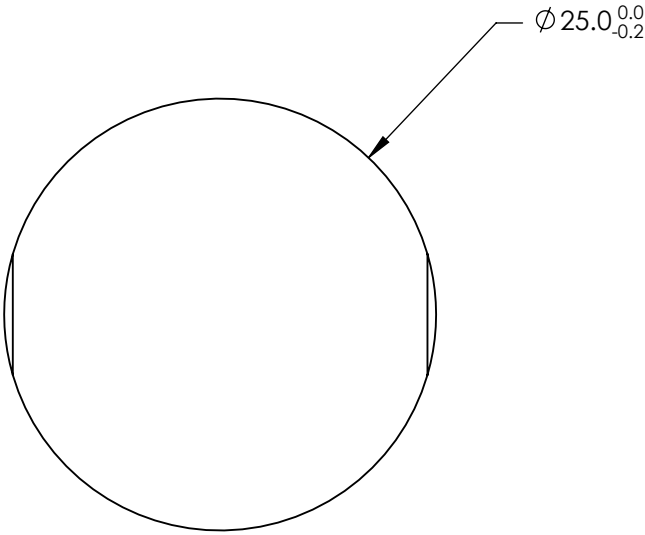


NOTES:


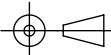
1. SUBSTRATE MATERIAL:  
N-BK7
2. COATING (APPLY ACROSS CLEAR APERTURE)  
  
S1 & S2: VIS 0°  
  
R(avg) ≤0.4% @ 425 - 675nm

3. FINE GROUND SURFACE
4. POWER, IRREGULARITY, AND SURFACE QUALITY  
SPECIFICAIONS APPLY ACROSS CLEAR APERTURE
5. RoHS COMPLIANT



**FOR INFORMATION ONLY:  
DO NOT MANUFACTURE  
PARTS TO THIS DRAWING**

SPECIFICATIONS SUBJECT TO CHANGE WITHOUT NOTICE  
DIMENSIONS ARE FOR REFERENCE ONLY

REV. A	S1	S2	<div>EFL-75</div> <div>BFL-77.31</div> <div> Edmund Optics®</div>				
SHAPE	CONVEX	PLANO					
RADIUS	-38.76	∞	<div>THIRD ANGLE PROJECTION</div> <div>TITLE</div> <div>25mm DIA X -75mm FL VIS 0° COATED, CYLINDER LENS</div>				
SURFACE QUALITY	60-40	60-40					
CLEAR APERTURE	Ø24.00	Ø24.00	<div>ALL DIMS INmm</div> <div>DWG NO</div> <div>69804</div> <div>SHEET 1 OF 1</div>				
COATING APERTURE	Ø24.00	Ø24.00					
BEVEL	PROTECTED AS NEEDED	PROTECTED AS NEEDED					