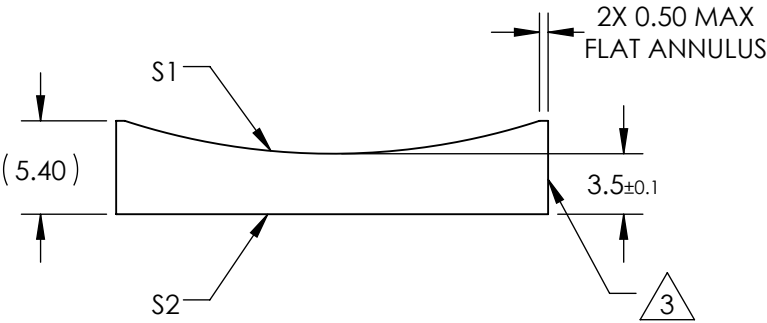
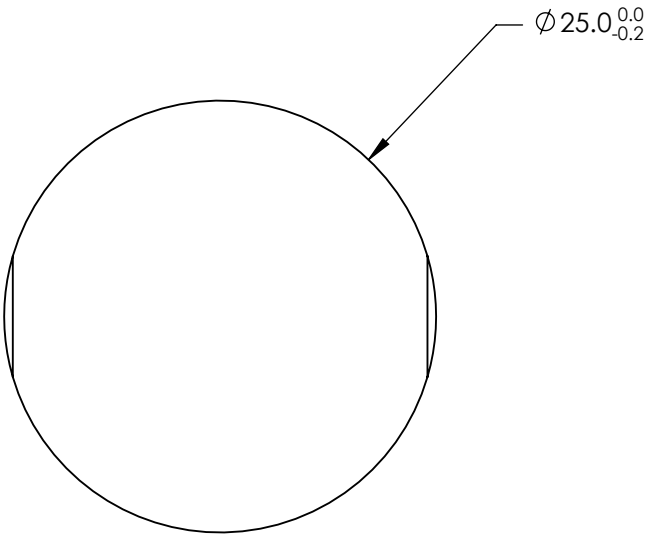


NOTES:

1. SUBSTRATE MATERIAL:
N-BK7
2. COATING (APPLY ACROSS CLEAR APERTURE)
- S1 & S2: NIR I
- R(avg) $\leq 0.5\%$ @ 600 - 1050nm


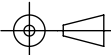
3. FINE GROUND SURFACE

4. POWER, IRREGULARITY, AND SURFACE QUALITY
SPECIFICAIONS APPLY ACROSS CLEAR APERTURE
5. RoHS COMPLIANT



**FOR INFORMATION ONLY:
DO NOT MANUFACTURE
PARTS TO THIS DRAWING**

SPECIFICATIONS SUBJECT TO CHANGE WITHOUT NOTICE
DIMENSIONS ARE FOR REFERENCE ONLY

REV. A	S1	S2	<div>EFL-75</div> <div>BFL-77.31</div> <div> Edmund Optics®</div>				
SHAPE	CONVEX	PLANO					
RADIUS	-38.76	∞					
SURFACE QUALITY	60-40	60-40	<div>THIRD ANGLE PROJECTION</div> <div></div>		TITLE	25mm DIA X -75mm FL NIR I COATED, CYLINDER LENS	
CLEAR APERTURE	Ø24.00	Ø24.00					
COATING APERTURE	Ø24.00	Ø24.00					
BEVEL	PROTECTED AS NEEDED	PROTECTED AS NEEDED	ALL DIMS IN	mm	DWG NO	69824	SHEET 1 OF 1