

NOTES:

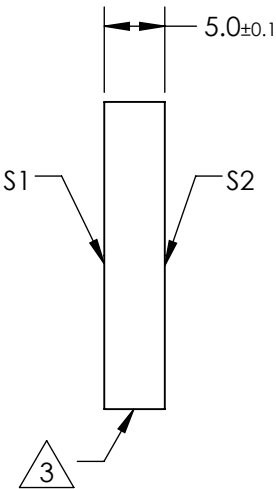
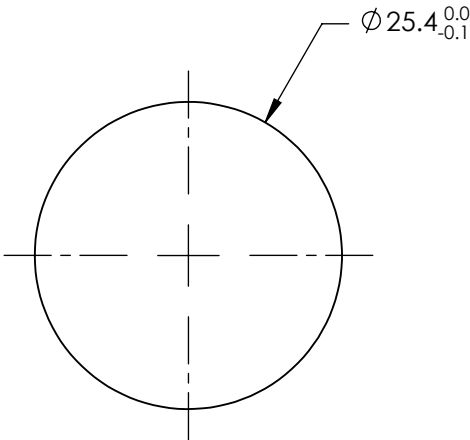
1. SUBSTRATE MATERIAL:
Fused Silica

2. COATING (APPLY ACROSS CLEAR APERTURE)

S1: Dielectric
REFLECTIVITY (Rs%, Rp%): >99.8
REFLECTIVITY (Rp%): 99.95
REFLECTIVITY (Rs%): 99.995
DAMAGE THRESHOLD (PULSED): >12 J/cm² @ 1064nm, 10ns
DURABILITY: MIL-C-675A
S2: NONE

3. FINE GROUND SURFACE

4. RoHS COMPLIANT



SPECIFICATIONS SUBJECT TO CHANGE WITHOUT NOTICE
DIMENSIONS ARE FOR REFERENCE ONLY

	S1	S2
SHAPE	PLANO	PLANO
CLEAR APERTURE (%)	>90	N/A
SURFACE QUALITY	20-10	COMMERCIAL POLISH
SURFACE FLATNESS	$\lambda/8$	N/A
WAVELENGTH RANGE (nm)	1030 - 1064	N/A
BEVEL	PROTECTIVE AS NEEDED	PROTECTIVE AS NEEDED

 **Edmund Optics®**



ALL DIMS IN

mm

TITLE

1064nm, 45° 25.4mm Dia. Nd:YAG IBS Low
Loss Laser Line Mirror

DWG NO

89453

SHEET
1 OF 1