

NOTES:

1. SUBSTRATE:
Fused Silica
2. SURFACE S2 TO BE PARALLEL TO SURFACE S1 TO WITHIN <5 ARCMIN
3. COATING (APPLY ACROSS COATING APERTURE):

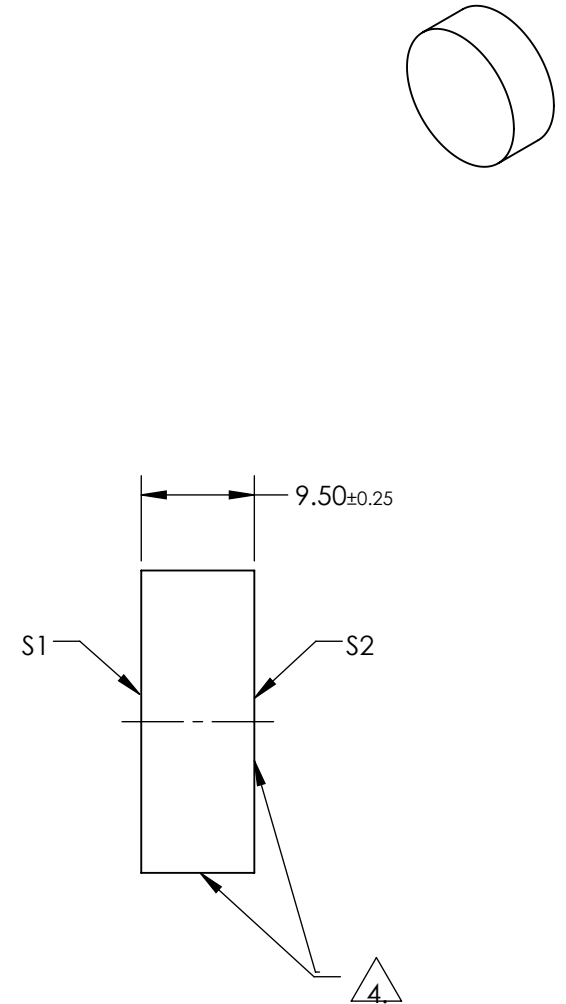
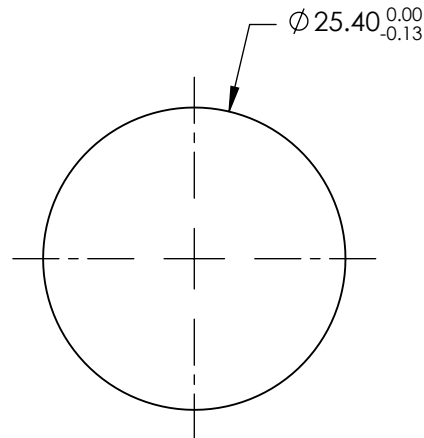
S1: Nd:YAG Laser
R(ABS) >99.5% @ 355nm @ 0° AOI

DAMAGE THRESHOLD:
PULSED: 6 J/cm² @ 355nm, 10ns, 20Hz

S2: NONE

4. FINE GRIND SURFACE

5. SURFACE QUALITY SPECIFICATIONS APPLY ACROSS CLEAR APERTURE
6. CLEAR APERTURE AND COATING APERTURE ARE CENTERED ON SURFACES
7. ROHS COMPLIANT



**FOR INFORMATION ONLY:
DO NOT MANUFACTURE
PARTS TO THIS DRAWING**

SPECIFICATIONS SUBJECT TO CHANGE WITHOUT NOTICE
DIMENSIONS ARE FOR REFERENCE ONLY

	S1	S2
SHAPE	PLANO	PLANO
SURFACE FLATNESS	$\lambda/6$	N/A
SURFACE QUALITY	10-5	COMMERCIAL POLISH
CLEAR APERTURE	85%	N/A
BEVEL	PROTECTIVE AS NEEDED	PROTECTIVE AS NEEDED



ALL DIMS IN mm

EO® Edmund Optics®

TITLE

25.4mm Dia. 355nm 0° Nd:YAG Laser Line
Mirror

DWG NO

36325

SHEET
1 OF 1