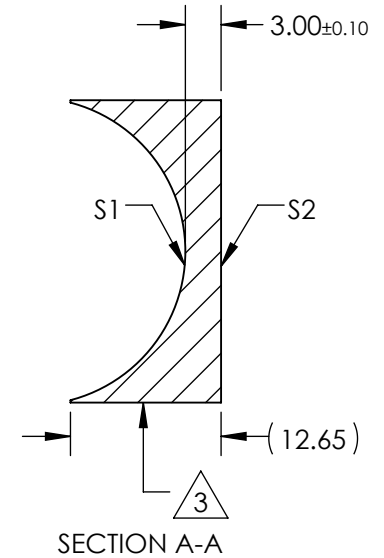
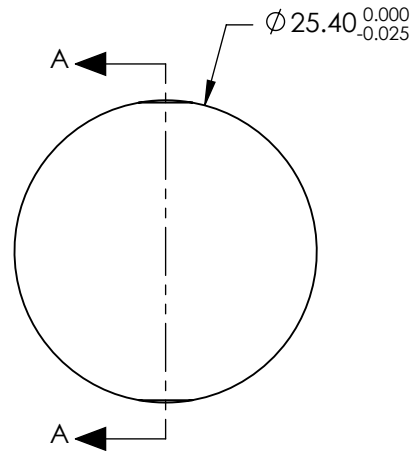

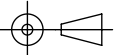
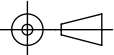


NOTES:

1. SUBSTRATE MATERIAL:
N-BK7
2. COATING (APPLY ACROSS CLEAR APERTURE)
S1 & S2:
NIR II
 $R(ABS) \leq 1.5\%$ FROM 750-800nm @ 0° AOI
 $R(ABS) \leq 1.0\%$ FROM 800-1550nm @ 0° AOI
 $R(AVG) \leq 0.7\%$ FROM 750-1550nm @ 0° AOI
3. FINE GROUND SURFACE
4. POWER, IRREGULARITY, AND SURFACE QUALITY
SPECIFICAIONS APPLY ACROSS CLEAR APERTURE
5. FOCAL LENGTH TOLERANCE: $\pm 1\%$
6. PLANO AXIS WEDGE TOLERANCE: < 5 ARCMIN
POWER AXIS WEDGE TOLERANCE: < 5 ARCMIN
7. RoHS COMPLIANT



**FOR INFORMATION ONLY:
DO NOT MANUFACTURE
PARTS TO THIS DRAWING**

REV. A	S1	S2	SPECIFICATIONS SUBJECT TO CHANGE WITHOUT NOTICE DIMENSIONS ARE FOR REFERENCE ONLY			
SHAPE	CONCAVE	PLANO				
RADIUS	12.92	∞	EFL	-25mm	 Edmund Optics®	
SURFACE QUALITY	40 - 20	40 - 20	BFL	-26.978mm		
CLEAR APERTURE	Ø22.86	Ø22.86			TITLE LENS CYL SHAPING 25.4mm DIA. X -25mm FL NIR II	
COATING APERTURE	Ø22.86	Ø22.86				
POWER AT 632.8nm	1.5 WAVES PV	1.5 WAVES PV			DWG NO 34641	
IRREGULARITY AT 632.8nm	0.25 WAVE PV	0.25 WAVE PV				
BEVEL	PROTECTIVE AS NEEDED	PROTECTIVE AS NEEDED	ALL DIMS IN	mm	SHEET 1 OF 1	