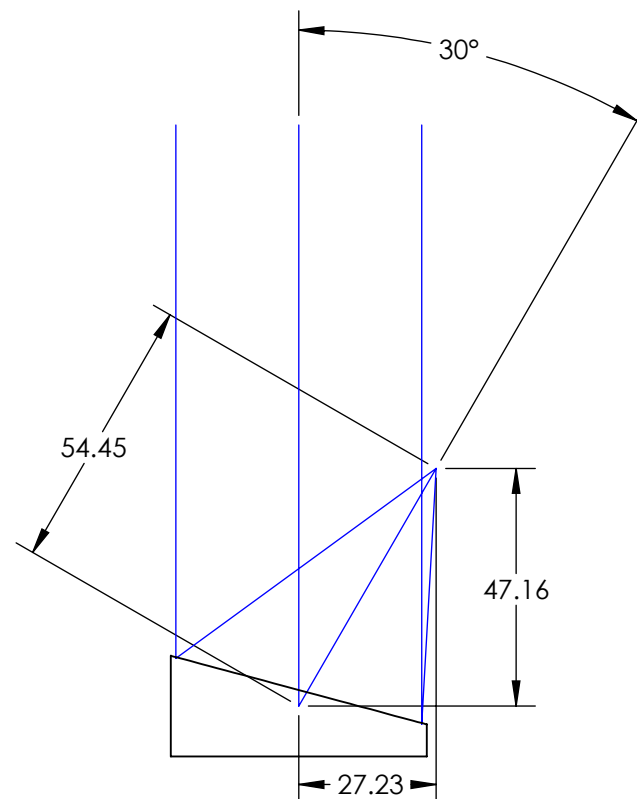
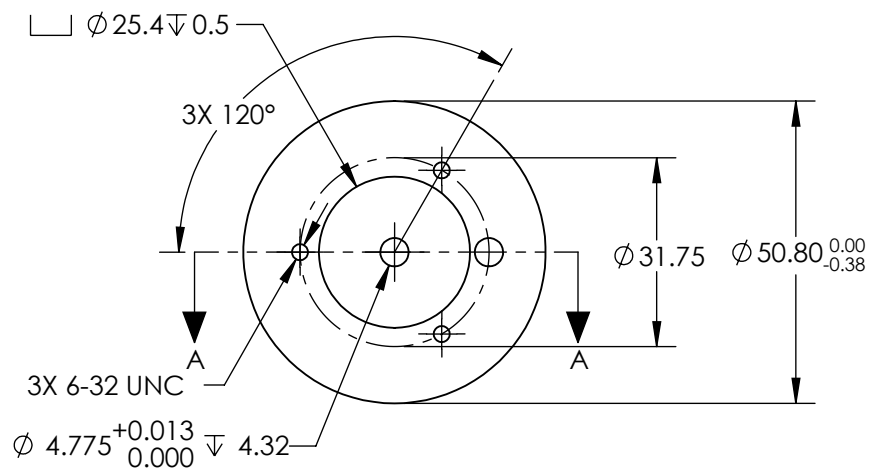
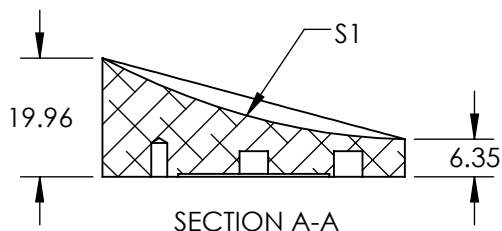
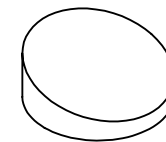


NOTES:


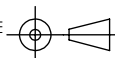
1. SUBSTRATE MATERIAL:
ALUMINUM
2. FINISH (EXCEPT SURFACE S1):
BLACK ANODIZED
3. COATING (APPLY ACROSS CLEAR APERTURE)
S1: PROTECTED ALUMINUM
R(AVG) >85% from 0.4-0.7 μ m
R(AVG) >97% from 2 - 12 μ m

SURFACE ROUGHNESS: <100 Å RMS
4. FOCAL LENGTH TOLERANCE: $\pm 1\%$
5. ROHS COMPLIANT

**FOR INFORMATION ONLY:
DO NOT MANUFACTURE
PARTS TO THIS DRAWING**



SPECIFICATIONS SUBJECT TO CHANGE WITHOUT NOTICE
DIMENSIONS ARE FOR REFERENCE ONLY

REV. A	S1	EFL	54.45	 Edmund Optics®		
SHAPE	PARABOLIC	PFL	50.80			
REFLECTIVE WAVEFRONT DISTORTION AT 632.8nm (RMS)	1λ	<div>THIRD ANGLE PROJECTION</div> 		TITLE	Ø50.8 X 54.45mm EFL 30° OAP PROTECTED ALUMINUM MIRROR 100Å	
SURFACE FIGURE AT 632.8nm (RMS)	λ/2					
CLEAR APERTURE	90%	ALL DIMS IN	mm	DWG NO	35492	SHEET 1 OF 1
BEVEL	PROTECTIVE AS NEEDED					