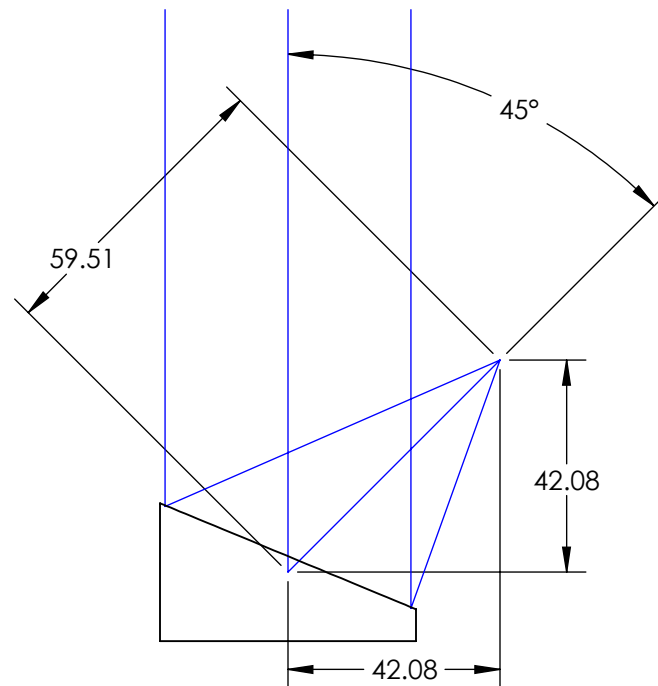
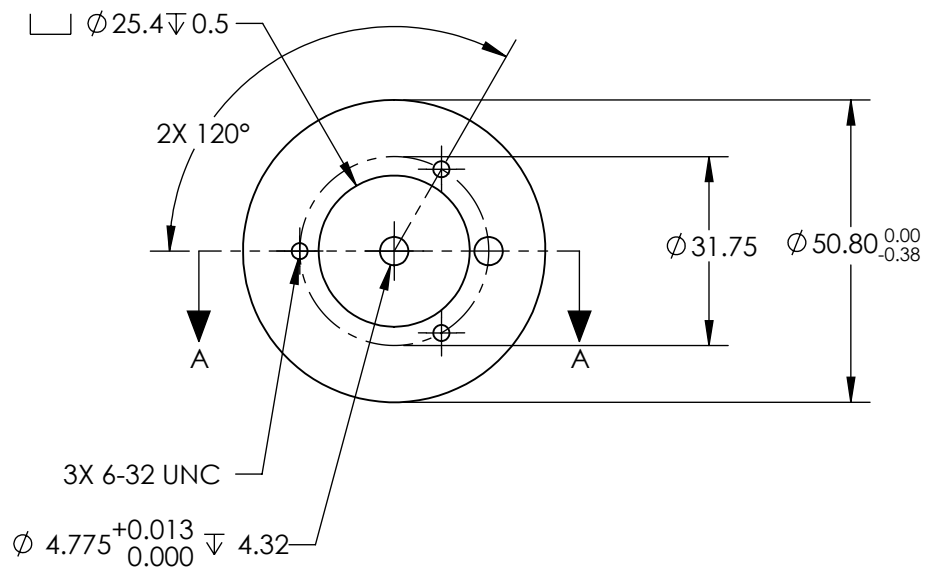
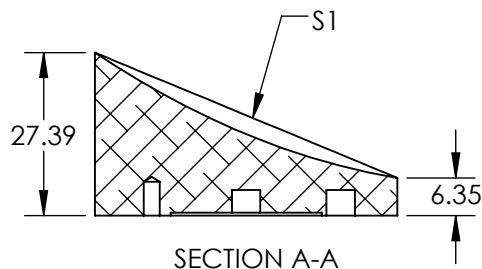
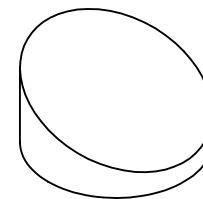


NOTES:


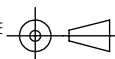
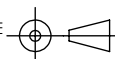
1. SUBSTRATE MATERIAL:
ALUMINUM
2. FINISH (EXCEPT SURFACE S1):
BLACK ANODIZED
3. COATING (APPLY ACROSS CLEAR APERTURE)
S1: PROTECTED GOLD
R(AVG) >94% @ 0.7-0.8 μ m
R(AVG) >97% @ 0.8-2.0 μ m
R(AVG) >98% @ 2-12 μ m

SURFACE ROUGHNESS: <100 Å RMS
4. FOCAL LENGTH TOLERANCE: $\pm 1\%$
5. ROHS COMPLIANT

**FOR INFORMATION ONLY:
DO NOT MANUFACTURE
PARTS TO THIS DRAWING**



SPECIFICATIONS SUBJECT TO CHANGE WITHOUT NOTICE
DIMENSIONS ARE FOR REFERENCE ONLY

REV. A	S1	EFL	59.51	 Edmund Optics®		
SHAPE	PARABOLIC	PFL	50.80			
REFLECTIVE WAVEFRONT DISTORTION AT 632.8nm (RMS)	1λ			TITLE	Ø50.8 X 59.51mm EFL 45° OAP PROTECTED GOLD MIRROR 100Å	
SURFACE FIGURE AT 632.8nm (RMS)	λ/2					
CLEAR APERTURE	90%			DWG NO	35551	
BEVEL	PROTECTIVE AS NEEDED					
						SHEET 1 OF 1