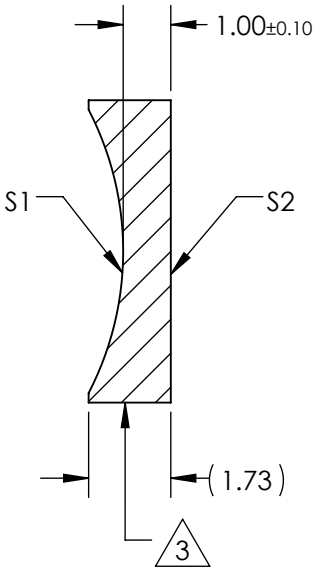
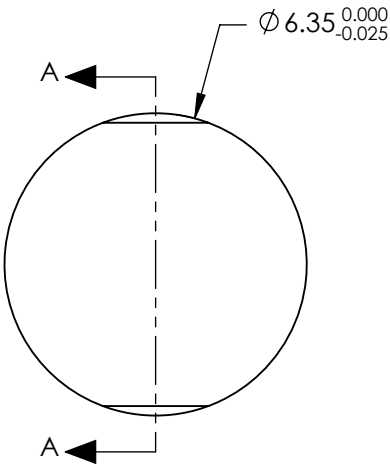


NOTES:

1. SUBSTRATE MATERIAL:
N-BK7
2. COATING (APPLY ACROSS CLEAR APERTURE)
S1 & S2:
NIR I
 $R(AVG) \leq 0.5\%$ FROM 600-1050nm @ 0° AOI

3. FINE GROUND SURFACE

4. POWER, IRREGULARITY, AND SURFACE QUALITY SPECIFICATIONS APPLY ACROSS CLEAR APERTURE
5. FOCAL LENGTH TOLERANCE: $\pm 1\%$
6. PLANO AXIS WEDGE TOLERANCE: < 5 ARCMIN
POWER AXIS WEDGE TOLERANCE: < 5 ARCMIN
7. RoHS COMPLIANT


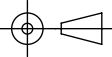


SECTION A-A

**FOR INFORMATION ONLY:
DO NOT MANUFACTURE
PARTS TO THIS DRAWING**

REV. A	S1	S2
SHAPE	CONCAVE	PLANO
RADIUS	6.46	∞
SURFACE QUALITY	40 - 20	40 - 20
CLEAR APERTURE	Ø5.72	Ø5.72
COATING APERTURE	Ø5.72	Ø5.72
POWER AT 632.8nm	1.5 WAVES PV	1.5 WAVES PV
IRREGULARITY AT 632.8nm	0.25 WAVE PV	0.25 WAVE PV
BEVEL	PROTECTIVE AS NEEDED	PROTECTIVE AS NEEDED

SPECIFICATIONS SUBJECT TO CHANGE WITHOUT NOTICE
DIMENSIONS ARE FOR REFERENCE ONLY

EFL	-12.50mm	 Edmund Optics®		
BFL	-13.16mm			
THIRD ANGLE PROJECTION 		TITLE	LENS CYL SHAPING 6.35mm DIA. X -12.50 mm FL NIR I	
ALL DIMS IN	mm	DWG NO	34677	SHEET 1 OF 1