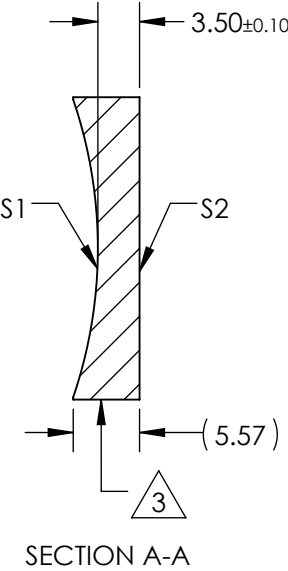
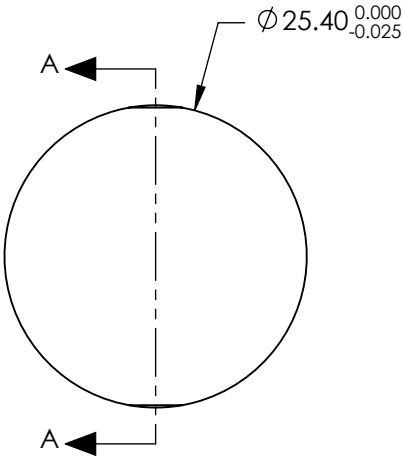


NOTES:


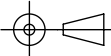
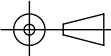
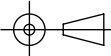
1. SUBSTRATE MATERIAL:
N-BK7
2. COATING (APPLY ACROSS CLEAR APERTURE)
S1 & S2:
NIR I
 $R(AVG) \leq 0.5\%$ FROM 600-1050nm @ 0° AOI

3. FINE GROUND SURFACE

4. POWER, IRREGULARITY, AND SURFACE QUALITY SPECIFICAIONS APPLY ACROSS CLEAR APERTURE
5. FOCAL LENGTH TOLERANCE: $\pm 1\%$
6. PLANO AXIS WEDGE TOLERANCE: < 5 ARCMIN
POWER AXIS WEDGE TOLERANCE: < 5 ARCMIN
7. RoHS COMPLIANT



**FOR INFORMATION ONLY:
DO NOT MANUFACTURE
PARTS TO THIS DRAWING**

REV. A	S1	S2	SPECIFICATIONS SUBJECT TO CHANGE WITHOUT NOTICE DIMENSIONS ARE FOR REFERENCE ONLY				
SHAPE	CONCAVE	PLANO	EFL	-75mm	 Edmund Optics®		
RADIUS	38.76	∞	BFL	-77.31mm			
SURFACE QUALITY	40 - 20	40 - 20			TITLE	LENS CYL SHAPING 25.4mm DIA. X -75mm FL NIR I	
CLEAR APERTURE	Ø22.86	Ø22.86					
COATING APERTURE	Ø22.86	Ø22.86			DWG NO	34684	
POWER AT 632.8nm	1.5 WAVES PV	1.5 WAVES PV					
IRREGULARITY AT 632.8nm	0.25 WAVE PV	0.25 WAVE PV			SHEET 1 OF 1		
BEVEL	PROTECTIVE AS NEEDED	PROTECTIVE AS NEEDED					