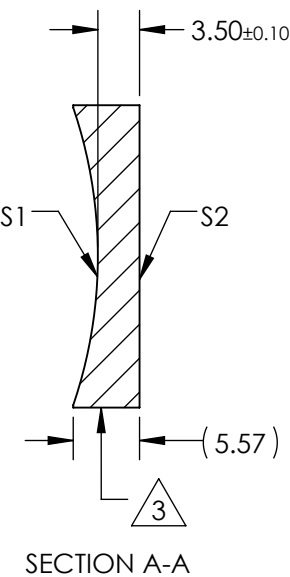
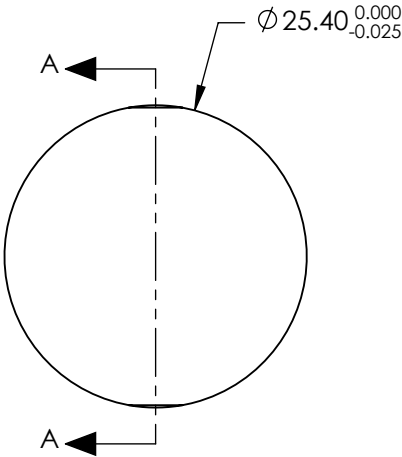


NOTES:


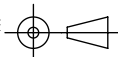
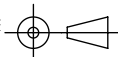
1. SUBSTRATE MATERIAL:
N-BK7
2. COATING (APPLY ACROSS CLEAR APERTURE)
S1 & S2: NONE

3. FINE GROUND SURFACE

4. POWER, IRREGULARITY, AND SURFACE QUALITY
SPECIFICAIONS APPLY ACROSS CLEAR APERTURE
5. FOCAL LENGTH TOLERANCE: $\pm 1\%$
6. PLANO AXIS WEDGE TOLERANCE: < 5 ARCMIN
POWER AXIS WEDGE TOLERANCE: < 5 ARCMIN
7. RoHS COMPLIANT



**FOR INFORMATION ONLY:
DO NOT MANUFACTURE
PARTS TO THIS DRAWING**

REV. A	S1	S2	SPECIFICATIONS SUBJECT TO CHANGE WITHOUT NOTICE DIMENSIONS ARE FOR REFERENCE ONLY			
SHAPE	CONCAVE	PLANO				
RADIUS	38.76	∞	EFL	(-75)mm	 Edmund Optics®	
SURFACE QUALITY	40 - 20	40 - 20	BFL	(-77.31)mm		
CLEAR APERTURE	$\varnothing 22.86$	$\varnothing 22.86$			TITLE Lens PCV Cylinder 25.40mm Dia. x -75.00 EFL	
COATING APERTURE	N/A	N/A				
POWER AT 632.8nm	1.5 WAVES PV	1.5 WAVES PV			DWG NO 34623	
IRREGULARITY AT 632.8nm	0.25 WAVE PV	0.25 WAVE PV				
BEVEL	PROTECTIVE AS NEEDED	PROTECTIVE AS NEEDED	ALL DIMS IN	mm	SHEET 1 OF 1	