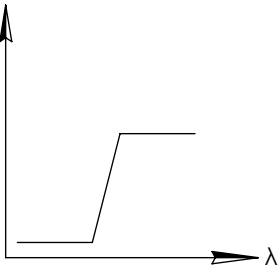
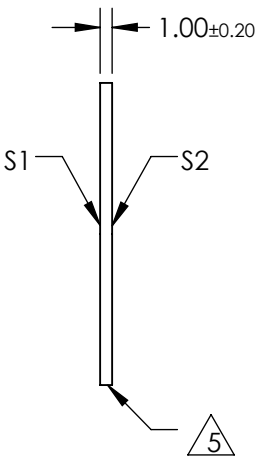
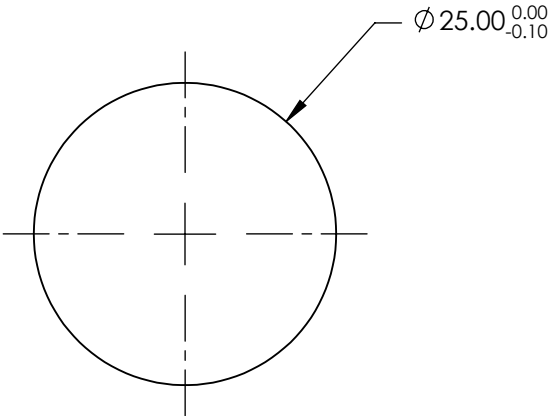
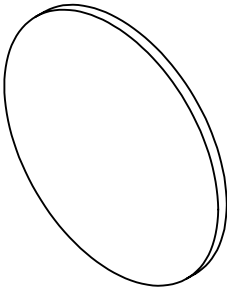


**FOR INFORMATION ONLY:
DO NOT MANUFACTURE
PARTS TO THIS DRAWING**

NOTES:

- 1. SUBSTRATE:
SILICON (SI) OR GERMANIUM (GE)
- 2. SURFACE S2 TO BE PARALLEL TO SURFACE S1 TO WITHIN <10 arcmin
- 3. TRANSMISSION (%): >85%
- 4. CUT-ON WAVELENGTH: 6.0µm
- 5. FINE GRIND SURFACE
- 6. POWER, IRREGULARITY, AND SURFACE QUALITY SPECIFICATION APPLY
ACROSS CLEAR APERTURE
- 7. RoHS: COMPLIANT



SPECIFICATIONS SUBJECT TO CHANGE WITHOUT NOTICE
DIMENSIONS ARE FOR REFERENCE ONLY

Rev. A	S1	S2
SHAPE	PLANO	PLANO
SURFACE QUALITY	80-50	80-50
CLEAR APERTURE	3 - 5λ	3 - 5λ
COATING APERTURE	Ø22.5	Ø22.5
BEVEL	PROTECTIVE AS NEEDED	PROTECTIVE AS NEEDED



ALL DIMS IN

mm

TITLE

Ø25mm, 6µm, INFRARED LONGPASS FILTER

DWG NO

36151

SHEET
1 OF 1