

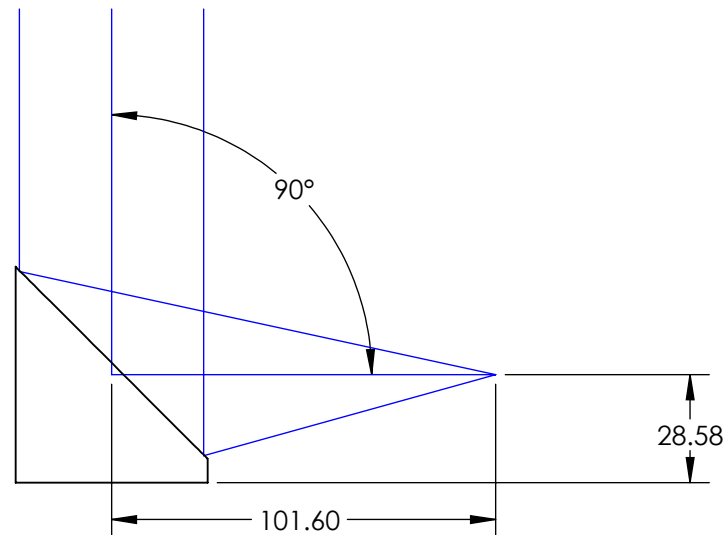
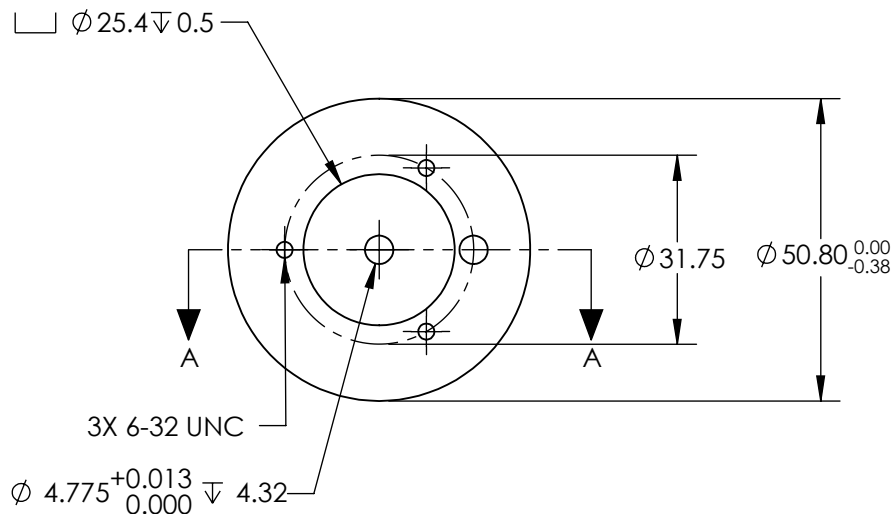
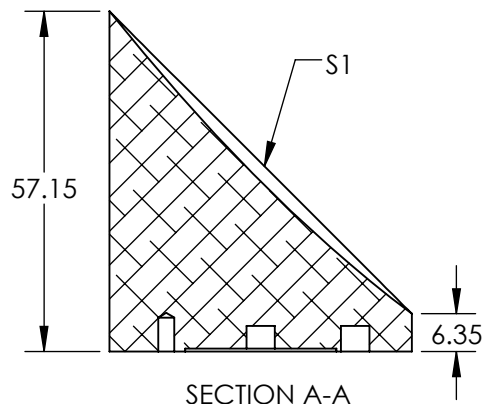
NOTES:

1. SUBSTRATE MATERIAL:  
ALUMINUM
2. FINISH (EXCEPT SURFACE S1):  
BLACK ANODIZED
3. COATING (APPLY ACROSS CLEAR APERTURE)  
S1: SILVER WITH PROTECTIVE OVERCOAT  
R(AVG)  $\geq 98\%$  from 2 - 12 $\mu\text{m}$



SURFACE ROUGHNESS: <100 Å RMS

4. FOCAL LENGTH TOLERANCE:  $\pm 1\%$
5. ROHS COMPLIANT

**FOR INFORMATION ONLY:  
DO NOT MANUFACTURE  
PARTS TO THIS DRAWING**



SPECIFICATIONS SUBJECT TO CHANGE WITHOUT NOTICE  
DIMENSIONS ARE FOR REFERENCE ONLY

REV. A	S1	EFL	101.60	 Edmund Optics®		
SHAPE	PARABOLIC	PFL	50.80			
REFLECTIVE WAVEFRONT DISTORTION AT 632.8nm (RMS)	1λ	<div>THIRD ANGLE PROJECTION</div> 	TITLE	Ø50.8 X 101.6mm EFL 90° OAP PROTECTED SILVER MIRROR 100Å		
SURFACE FIGURE AT 632.8nm (RMS)	λ/2					
CLEAR APERTURE	90%					
BEVEL	PROTECTIVE AS NEEDED	ALL DIMS IN	mm	DWG NO	36596	SHEET 1 OF 1