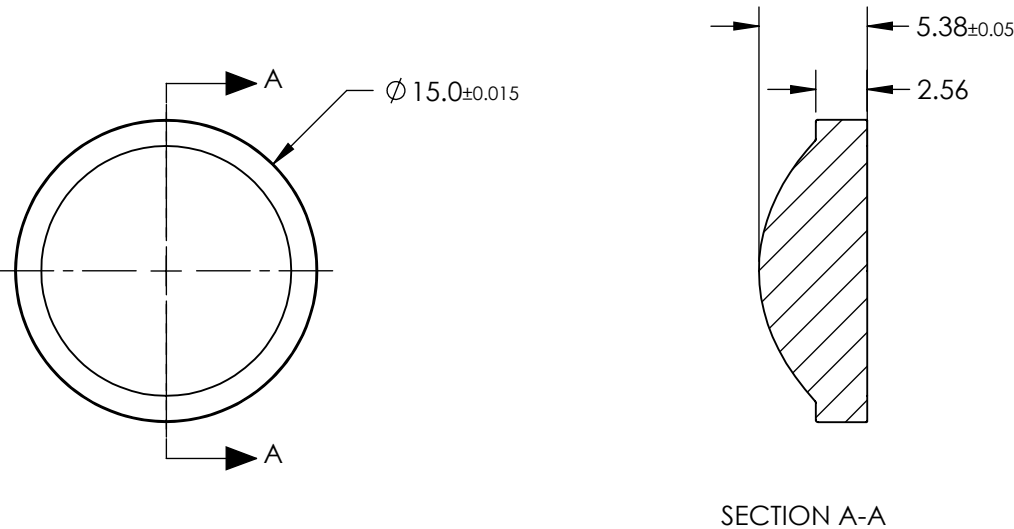



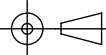
NOTES:

- 1. SUBSTRATE:
D-ZLAF52LA
- 2. NUMERICAL APERTURE: 0.6
- 3. COATING
S1 & S2: R (AVG) ≤ 0.5% @ 350 - 700nm
- 4. FOCAL LENGTH TOLERANCE: ±1%
- 5. TRANSMITTED WAVEFRONT ERROR (λ, RMS): < 0.040



**FOR INFORMATION ONLY:
DO NOT MANUFACTURE
PARTS TO THIS DRAWING**

SPECIFICATIONS SUBJECT TO CHANGE WITHOUT NOTICE
DIMENSIONS ARE FOR REFERENCE ONLY

			EFL	10.00	 Edmund Optics®	
			BFL	7.00		
SHAPE	S1 CONVEX	S2 PLANO			TITLE	0.60 NA 15.00mm FL 350-700nm AR Coated, Molded Aspheric Lens
SURFACE QUALITY	60-40	60-40				
CLEAR APERTURE	Ø13.00	Ø13.00				
BEVEL	PROTECTIVE AS NEEDED	PROTECTIVE AS NEEDED	ALL DIMS IN	mm	DWG NO	37105
						SHEET 1 OF 1