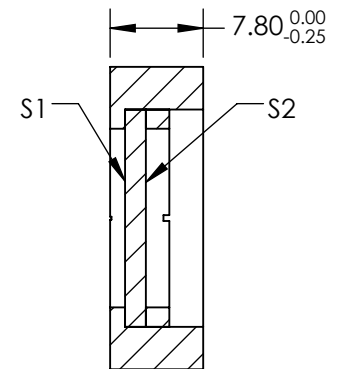
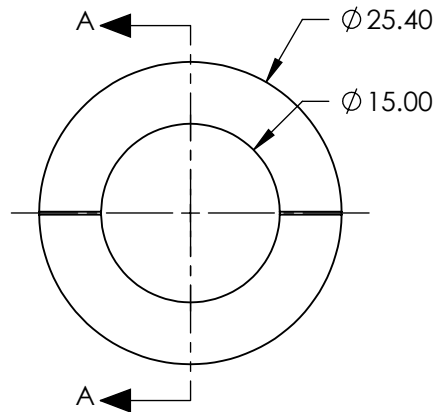
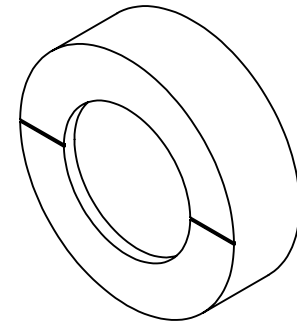
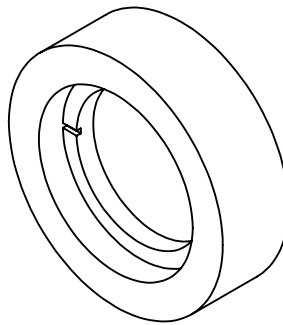


NOTES:

1. SUBSTRATE:  
CRYSTAL QUARTZ
2. COATING (APPLY ACROSS CLEAR APERTURE)  
S1 & S2: R(ABS) <0.25% @ 355nm  
DAMAGE THRESHOLD: 3.5 J/cm<sup>2</sup> @10ns @ 1064nm
3. SURFACE S1 TO BE PARALLEL TO SURFACE S2 TO WITHIN <0.5 arcsec
4. RETARDANCE:  $\lambda/2 \pm \lambda/200$
5. TRANSMITTED WAVEFRONT:  $\lambda/10$  FOR CENTRAL 80% OF CLEAR APERTURE
6. RoHS COMPLIANT

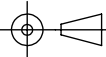


SECTION A-A

**FOR INFORMATION ONLY:  
DO NOT MANUFACTURE  
PARTS TO THIS DRAWING**

SPECIFICATIONS SUBJECT TO CHANGE WITHOUT NOTICE  
DIMENSIONS ARE FOR REFERENCE ONLY

**EO**® **Edmund Optics®**

|                 |       |       |   |        |  |                 |
|-----------------|-------|-------|---|--------|--|-----------------|
|                 | S1    | S2    | THIRD ANGLE<br>PROJECTION  | TITLE  | Ø25.4mm, 355nm, $\lambda/2$ QUARTZ WAVEPLATE<br>ZERO ORDER |                 |
| CLEAR APERTURE  | Ø15.0 | Ø15.0 |   | DWG NO | 46549  | SHEET<br>1 OF 1 |
| SURFACE QUALITY | 10-5  | 10-5  | ALL DIMS IN<br>mm   |        |  |                 |