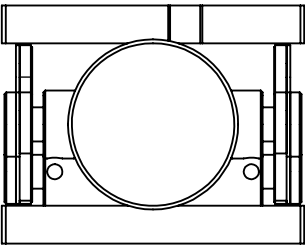
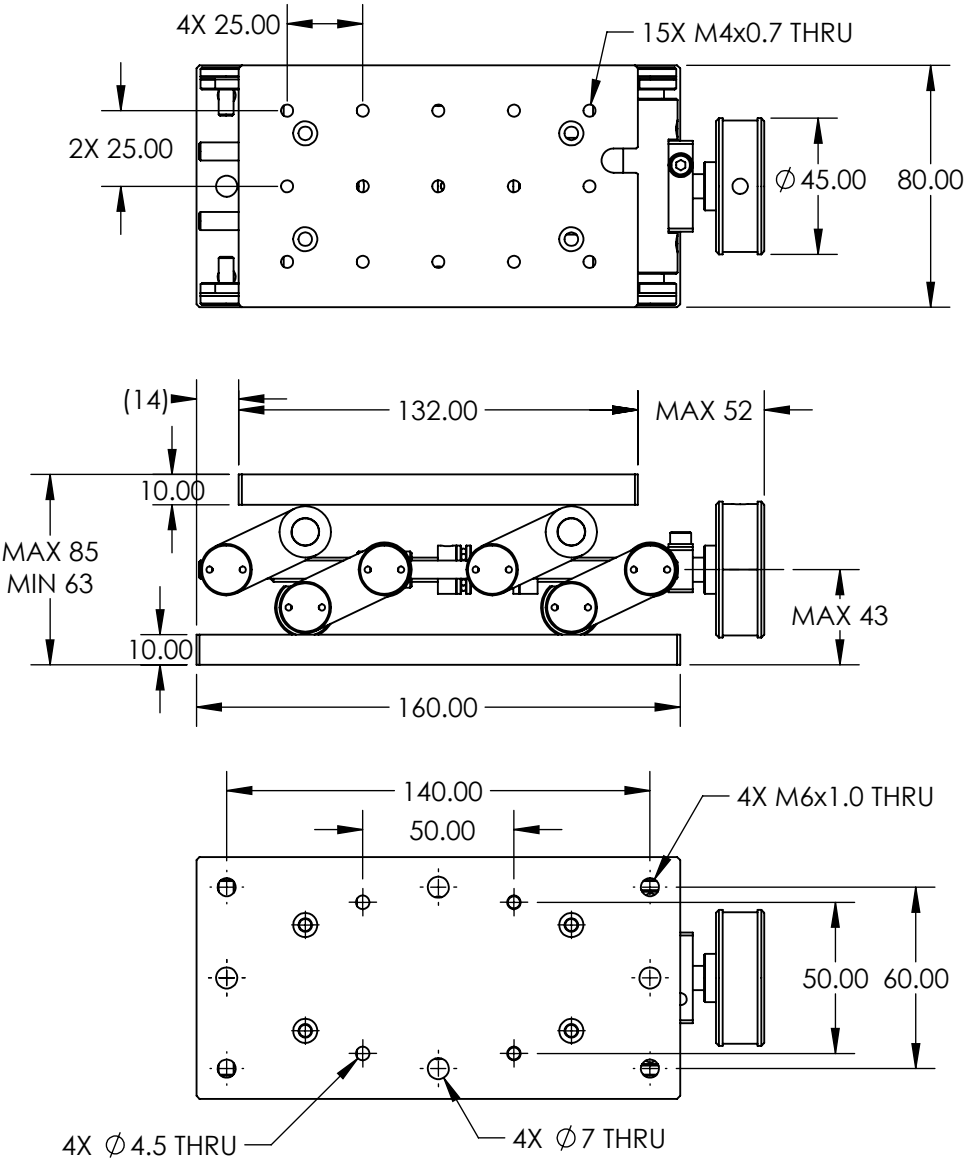


NOTES:

- 1. TRAVEL: 22mm (MIN 63mm / MAX 85mm)
- 2. INCLUDES ONE PACKAGE OF (4) M6x15mm LONG, FLAT POINT SET SCREWS FOR LOCKING



SPECIFICATIONS SUBJECT TO CHANGE WITHOUT NOTICE
DIMENSIONS ARE FOR REFERENCE ONLY

**FOR INFORMATION ONLY:
DO NOT MANUFACTURE
PARTS TO THIS DRAWING**

THIRD ANGLE PROJECTION		Edmund Optics®		
ALL DIMS IN		TITLE	SMALL METRIC LAB JACK	
mm		DWG NO	56-336	SHEET 1 OF 1