

NOTES:

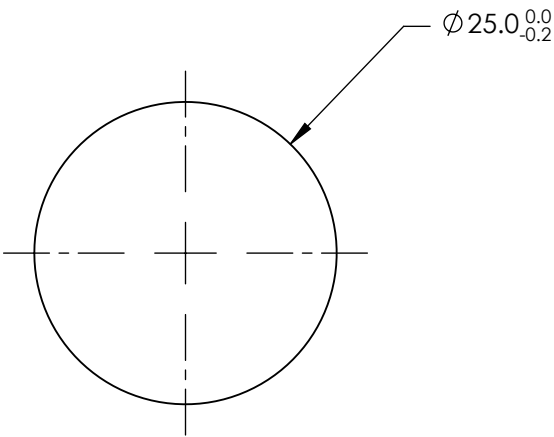
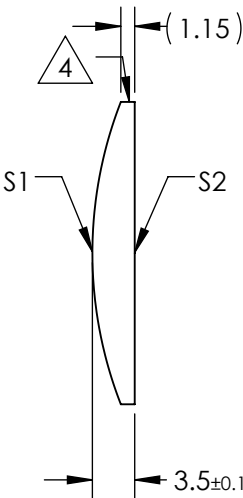
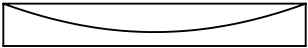
1. SUBSTRATE MATERIAL:
FUSED SILICA
2. COATING (APPLY ACROSS CLEAR APERTURE)

S1 & S2: NONE

3. WEDGE TOLERANCE: <15 arcmin


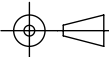
4. FINE GROUND SURFACE

5. POWER, IRREGULARITY, AND SURFACE QUALITY
SPECIFICAIONS APPLY ACROSS CLEAR APERTURE
6. RoHS COMPLIANT



**FOR INFORMATION ONLY:
DO NOT MANUFACTURE
PARTS TO THIS DRAWING**

SPECIFICATIONS SUBJECT TO CHANGE WITHOUT NOTICE
DIMENSIONS ARE FOR REFERENCE ONLY

REV. A	S1	S2	 Edmund Optics®					
SHAPE	CONVEX	PLANO						
RADIUS	34.39	∞	EFL	75	BFL	72.6		
SURFACE QUALITY	40-20	40-20						
CLEAR APERTURE	Ø24.00	Ø24.00	THIRD ANGLE PROJECTION		TITLE		25mm DIAMETER X 75mm FL UNCOATED, UV PCX CYLINDER LENS	
COATING APERTURE	Ø24.00	Ø24.00						
BEVEL	PROTECTED AS NEEDED	PROTECTED AS NEEDED	ALL DIMS IN	mm	DWG NO	68173	SHEET 1 OF 1	