

NOTES:

1. SUBSTRATE MATERIAL:  
FUSED SILICA
2. COATING (APPLY ACROSS CLEAR APERTURE)

S1 & S2: UV-VIS

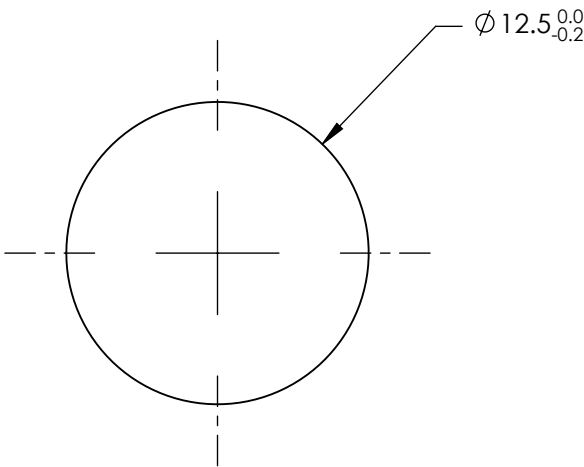
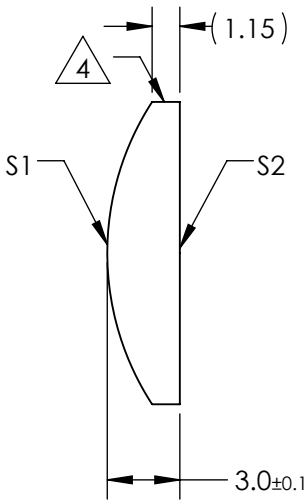
R(abs) ≤1.0% @ 350 - 450nm  
R(avg) ≤1.5% @ 250 - 700nm

3. WEDGE TOLERANCE: <15 arcmin

4. FINE GROUND SURFACE


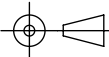
5. POWER, IRREGULARITY, AND SURFACE QUALITY  
SPECIFICATIONS APPLY ACROSS CLEAR APERTURE

6. RoHS COMPLIANT



**FOR INFORMATION ONLY:  
DO NOT MANUFACTURE  
PARTS TO THIS DRAWING**

SPECIFICATIONS SUBJECT TO CHANGE WITHOUT NOTICE  
DIMENSIONS ARE FOR REFERENCE ONLY

REV. A	S1	S2	 Edmund Optics®					
SHAPE	CONVEX	PLANO						
RADIUS	11.46	∞	EFL	25	BFL	22.94		
SURFACE QUALITY	40-20	40-20			TITLE	12.5mm DIAMETER X 25mm FL UV-VIS COATED, UV PCX CYLINDER LENS		
CLEAR APERTURE	Ø11.50	Ø11.50			ALL DIMS IN	mm	DWG NO	86042
COATING APERTURE	Ø11.50	Ø11.50			SHEET 1 OF 1			
BEVEL	PROTECTED AS NEEDED	PROTECTED AS NEEDED						