

NOTES:

1. SUBSTRATE MATERIAL:
FUSED SILICA
2. COATING (APPLY ACROSS CLEAR APERTURE)

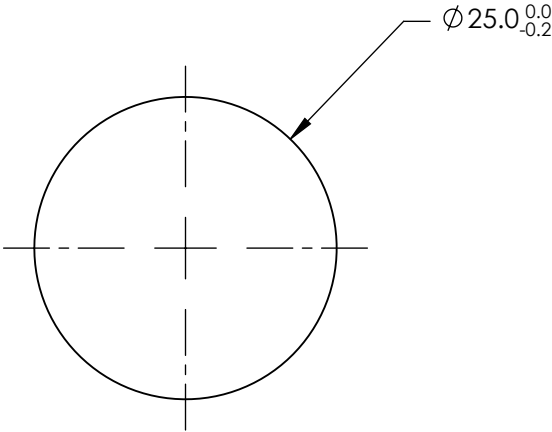
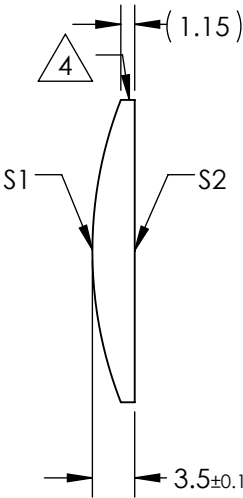
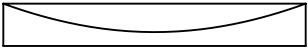
S1 & S2: UV-VIS

R(abs) ≤1.0% @ 350 - 450nm
R(avg) ≤1.5% @ 250 - 700nm

3. WEDGE TOLERANCE: <15 arcmin


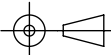
4. FINE GROUND SURFACE

5. POWER, IRREGULARITY, AND SURFACE QUALITY
SPECIFICAIONS APPLY ACROSS CLEAR APERTURE
6. RoHS COMPLIANT



**FOR INFORMATION ONLY:
DO NOT MANUFACTURE
PARTS TO THIS DRAWING**

SPECIFICATIONS SUBJECT TO CHANGE WITHOUT NOTICE
DIMENSIONS ARE FOR REFERENCE ONLY

REV. A	S1	S2	 Edmund Optics®						
SHAPE	CONVEX	PLANO						EFL	75
RADIUS	34.39	∞	BFL	72.6					
SURFACE QUALITY	40-20	40-20	TITLE						
CLEAR APERTURE	Ø24.00	Ø24.00							
COATING APERTURE	Ø24.00	Ø24.00	ALL DIMS IN		mm	DWG NO	86047	SHEET 1 OF 1	
BEVEL	PROTECTED AS NEEDED	PROTECTED AS NEEDED							