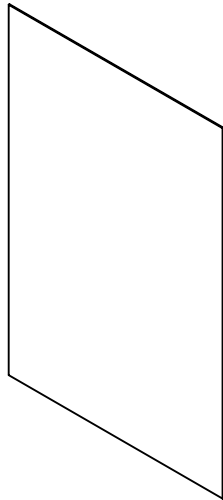
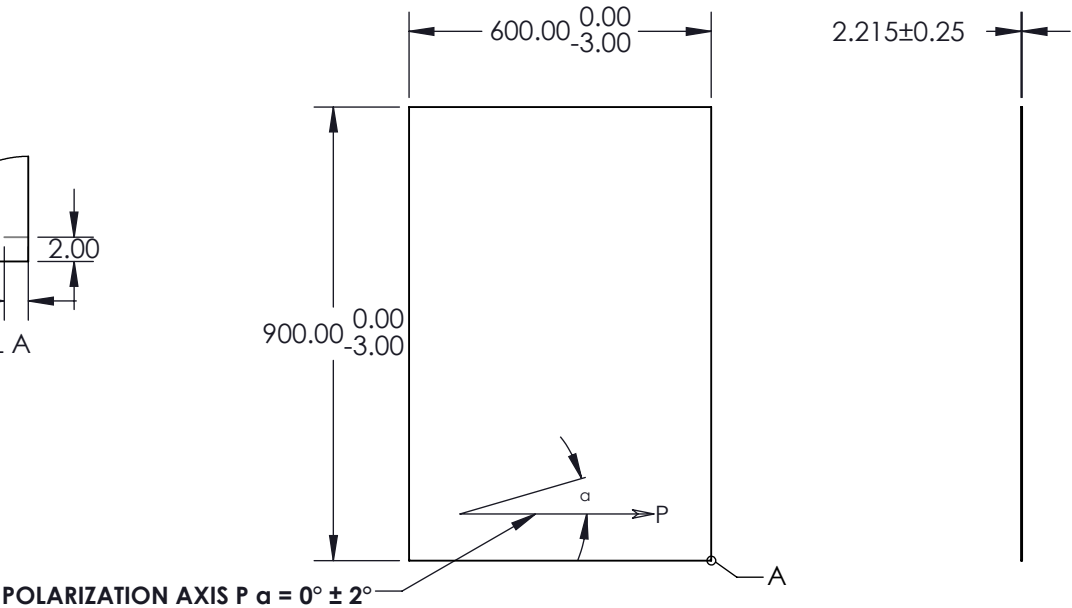
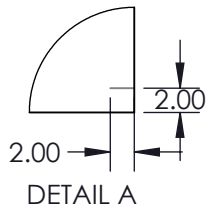


- NOTES:
- 1. SUBSTRATE: PMMA
 - 2. WAVELENGTH RANGE (nm): 400 - 700
 - 3. EXTINCTION RATIO: 9000:1
 - 4. OPERATING TEMPERATURE (°C): -40 to +80
 - 5. TRANSMISSION (%):
 - Single: 42
 - Parallel: 36
 - Crossed: < 0.004
 - 6. RoHS: COMPLIANT

**FOR INFORMATION ONLY:
DO NOT MANUFACTURE
PARTS TO THIS DRAWING**



SPECIFICATIONS SUBJECT TO CHANGE WITHOUT NOTICE
DIMENSIONS ARE FOR REFERENCE ONLY

Edmund Optics®

THE POLARIZERS CONSISTS OF A POLYMER POLARIZATION
FILM LAMINATED ONTO PMMA.

THIRD ANGLE PROJECTION		TITLE	600 x 900mm Linear Plastic Polarizer, Unmounted	
ALL DIMS IN	mm	DWG NO	86201	SHEET 1 OF 1