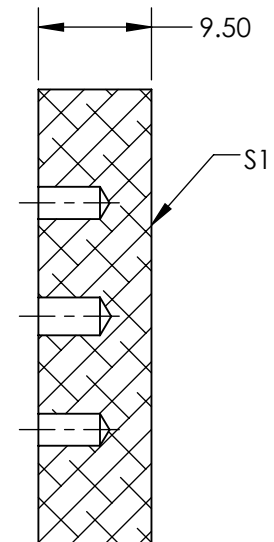
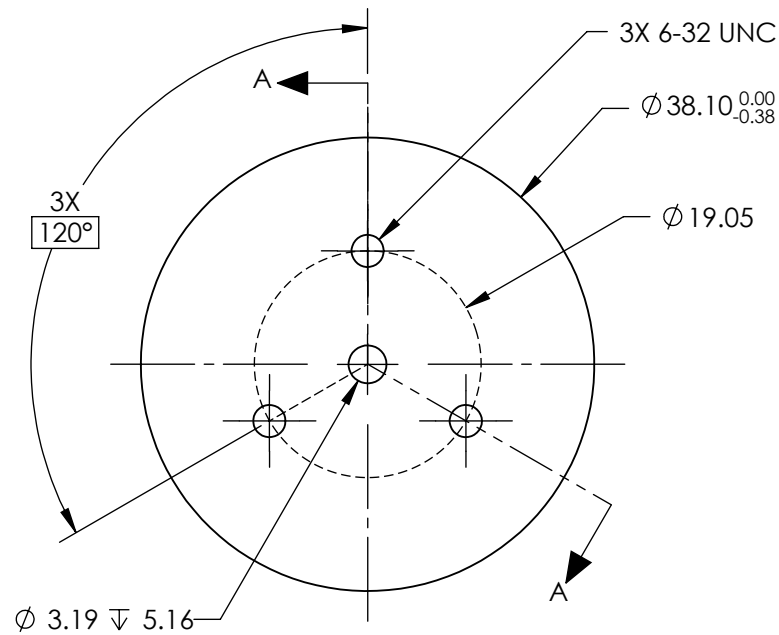
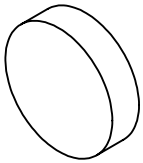


- NOTES:
- 1. SUBSTRATE MATERIAL:
ALUMINUM
 - 2. FINISH (EXCEPT SURFACE S1):
BLACK ANODIZED
 - 3. COATING (APPLY ACROSS CLEAR APERTURE)

S1: PROTECTED ALUMINUM
R(AVG) >85% @ 400 - 700nm
R(AVG) >70% @ 700 - 2000nm
R(AVG) >97% @ 2 - 12μm
- SURFACE ROUGHNESS: <175Å
4. ROHS COMPLIANT

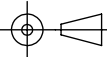
**FOR INFORMATION ONLY:
DO NOT MANUFACTURE
PARTS TO THIS DRAWING**



SECTION A-A

SPECIFICATIONS SUBJECT TO CHANGE WITHOUT NOTICE
DIMENSIONS ARE FOR REFERENCE ONLY

Edmund Optics®

	S1	THIRD ANGLE PROJECTION 		TITLE	Ø38.1mm, ALUM. COATED, ALUM. SUBSTRATE MIRROR	
SHAPE	PLANO					
SURFACE ACCURACY AT 632.8nm	λ/4 RMS	ALL DIMS IN	mm	DWG NO	47115	SHEET 1 OF 1
SURFACE QUALITY	80-50					