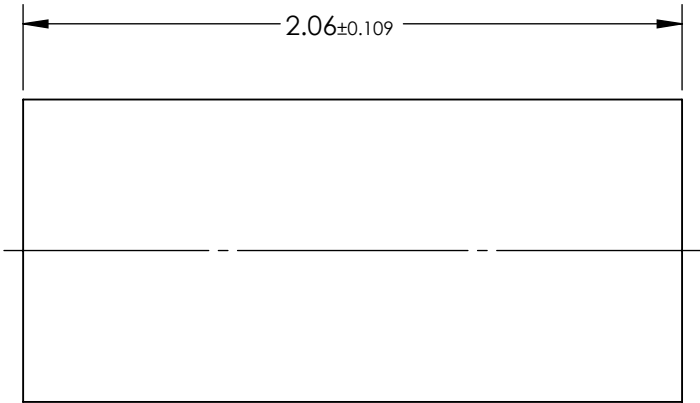
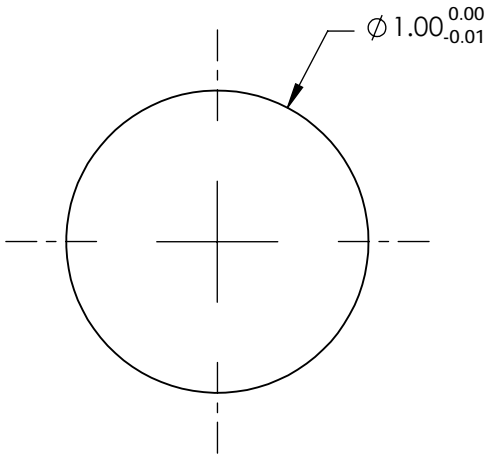


NOTES:

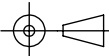
- 1. SUBSTRATE:
Alumoscilate Glass Embedded with Silver Ions
- 2. COATING (APPLY ACROSS COATING APERTURE)
S1 & S2: Uncoated
- 3. EFL: 0.90
- 4. f/# : 0.9
- 5. NUMERICAL APERTURE: 0.53
- 6. DESIGN WAVELENGTH: 810nm
- 7. WORKING DISTANCE: 0.12 - 0.11mm ±0.02
- 8. ROHS: COMPLIANT



**FOR INFORMATION ONLY:
DO NOT MANUFACTURE
PARTS TO THIS DRAWING**

SPECIFICATIONS SUBJECT TO CHANGE WITHOUT NOTICE
DIMENSIONS ARE FOR REFERENCE ONLY

EO[®] Edmund Optics[®]

	S1	S2	<div>THIRD ANGLE PROJECTION</div> 		TITLE	1.0mm Dia, 810nm DWL, 0.12mm WD, Uncoated, GRIN Lens	
SHAPE	PLANO	PLANO					
SURFACE QUALITY	40-20	40-20	<div>ALL DIMS IN</div> <div>mm</div>		DWG NO	64524	SHEET 1 OF 1
CLEAR APERTURE	Ø0.9	Ø0.9					