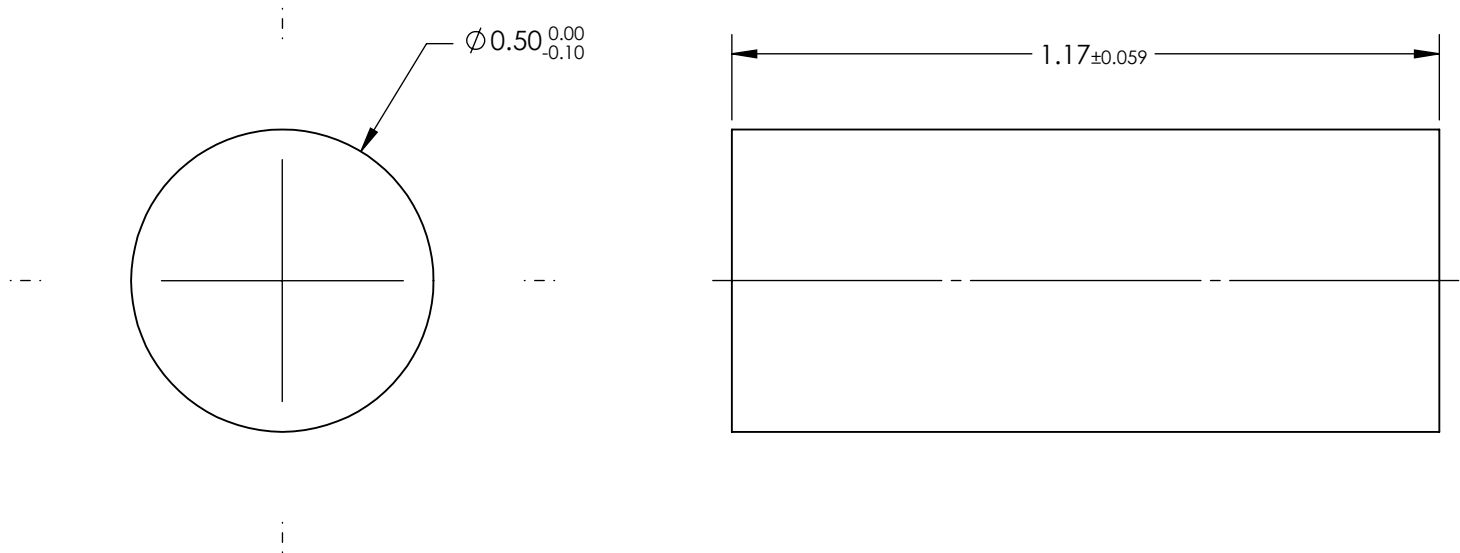


NOTES:

- 1. SUBSTRATE:  
Alumoscilate Glass Embedded with Silver Ions
- 2. COATING (APPLY ACROSS COATING APERTURE)  
S1 & S2: Uncoated
- 3. EFL: 0.46
- 4. f/# : 0.92
- 5. NUMERICAL APERTURE: 0.53
- 6. DESIGN WAVELENGTH: 1550nm
- 7. WORKING DISTANCE: 0mm
- 8. ROHS: COMPLIANT



**FOR INFORMATION ONLY:  
DO NOT MANUFACTURE  
PARTS TO THIS DRAWING**

SPECIFICATIONS SUBJECT TO CHANGE WITHOUT NOTICE  
DIMENSIONS ARE FOR REFERENCE ONLY

**EO<sup>®</sup> Edmund Optics<sup>®</sup>**

	S1	S2	<div>THIRD ANGLE PROJECTION</div>		TITLE	0.5mm Dia, 1550nm DWL, 0.0mm WD, Uncoated, GRIN Lens	
SHAPE	PLANO	PLANO					
SURFACE QUALITY	40-20	40-20	<div>ALL DIMS IN</div> <div>mm</div>		DWG NO	64527	
CLEAR APERTURE	Ø0.45	Ø0.45					
						SHEET 1 OF 1	