

NOTES:

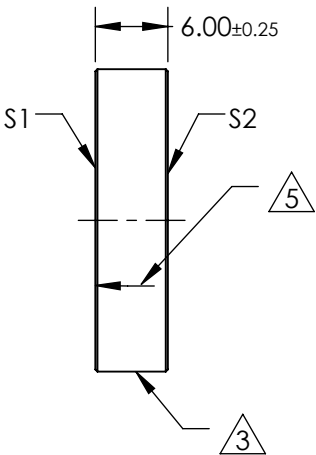
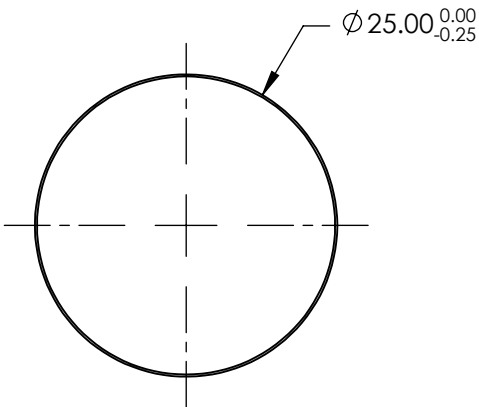
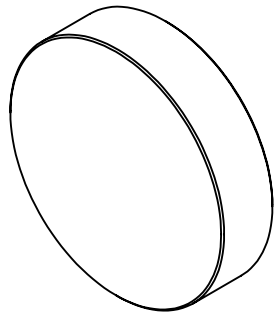
1. SUBSTRATE  
Fused Silica
2. COATING (APPLY ACROSS CLEAR APERTURE)  
S1: P-POLARIZATION TRANSMISSION EFFICIENCY: > 98%  
EXTINCTION RATIO: 10000:1
- Damage Threshold, Pulsed:  
2 J/cm<sup>2</sup> @ 532nm, 10ns, S or P Polarization

3 FINE GROUND SURFACE

4. POWER, IRREGULARITY, SURFACE QUALITY, AND COATING  
SPECIFICATIONS APPLY ACROSS CLEAR APERTURE

5 APPLY ARROW ON EDGE WITH PENCIL OR PERMANENT INK TOWARDS S1

6. DESIGN WAVELENGTH: 1064nm
7. RoHS: COMPLIANT



**FOR INFORMATION ONLY:**  
**DO NOT MANUFACTURE**  
**PARTS TO THIS DRAWING**

SPECIFICATIONS SUBJECT TO CHANGE WITHOUT NOTICE  
DIMENSIONS ARE FOR REFERENCE ONLY

|                        | S1                   | S2                   |
|------------------------|----------------------|----------------------|
| TRANSMITTED WAVEFRONT  | $\lambda/4$ @ 633nm  | $\lambda/4$ @ 633nm  |
| ANGLE OF INCIDENCE (°) | 45 ±2                | 45 ±2                |
| SHAPE                  | PLANO                | PLANO                |
| SURFACE QUALITY        | 40-20                | 40-20                |
| CLEAR APERTURE         | Ø22.50               | Ø22.50               |
| BEVEL                  | PROTECTIVE AS NEEDED | PROTECTIVE AS NEEDED |



ALL DIMS IN

mm



Edmund Optics

TITLE

1064nm, 25mm DIAMETER, THIN-FILM LASER LINE  
POLARIZERS

DWG NO

86716

SHEET  
1 OF 1