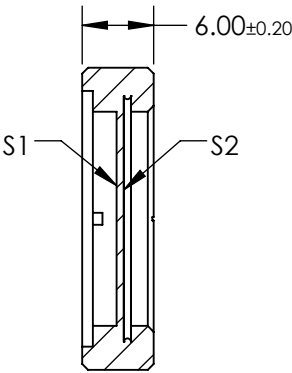
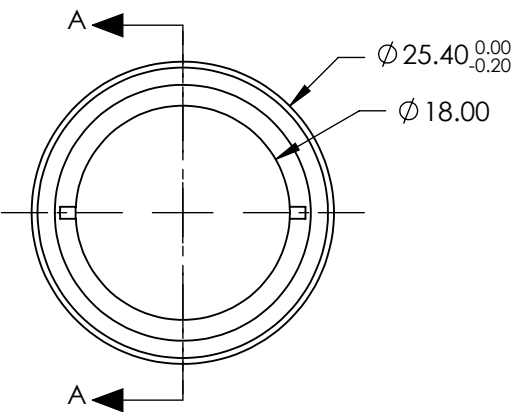


- NOTES:
- 1. SUBSTRATE:  
Crystalline Quartz
  - 2. COATING (APPLY ACROSS COATING APERTURE):  
S1 & S2: R(AVG) <0.2%
  - DAMAGE THRESHOLD,  
PULSED: >20 J/cm<sup>2</sup>, 10ns @ 10Hz @ 1064nm
  - 3. SURFACE S1 TO BE PARALLEL TO SURFACE S2 TO WITHIN <3 ARCSEC
  - 4. RETARDANCE:  $\lambda/2 \pm \lambda/300$  @ 20°C  
RETARDANCE ORDER: 0
  - 5. DESIGN WAVELENGTH: 780nm
  - 6. TRANSMITTED WAVEFRONT: < $\lambda/10$  @ 632.8nm
  - 7. ROHS: COMPLIANT

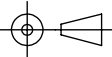


SECTION A-A

**FOR INFORMATION ONLY:  
DO NOT MANUFACTURE  
PARTS TO THIS DRAWING**

SPECIFICATIONS SUBJECT TO CHANGE WITHOUT NOTICE  
DIMENSIONS ARE FOR REFERENCE ONLY

**EO**<sup>®</sup> Edmund Optics<sup>®</sup>

	S1	S2	THIRD ANGLE PROJECTION 		TITLE	25.4mm Dia., 780nm, $\lambda/2$ High Energy Waveplate	
SURFACE QUALITY	20-10	20-10	ALL DIMS IN	mm	DWG NO	39173	SHEET 1 OF 1
CLEAR APERTURE	$\phi 18.00$	$\phi 18.00$					