

NOTES:

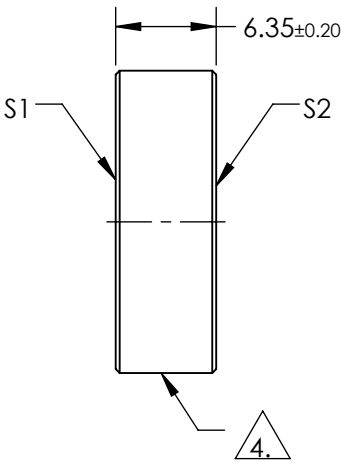
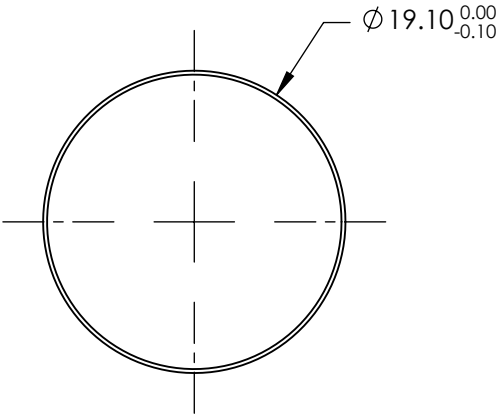
1. SUBSTRATE:
FUSED SILICA
2. SURFACE S2 TO BE PARALLEL TO S1 TO WITHIN <3 ARCMIN
3. COATING (APPLY ACROSS COATING APERTURE)

S1: R(AVG) ≥ 98% @ 340-488nm @ 0° AOI
R(AVG) ≥ 98% @ 320-450nm @ 45° AOI FOR ALL POLARIZATION
R(AVG) ≥ 98% @ 320-450nm @ 45° FOR S-POLARIZATION

S2: NONE


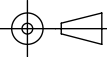
4. FINE GRIND SURFACE

5. ROHS COMPLIANT



**FOR INFORMATION ONLY:
DO NOT MANUFACTURE
PARTS TO THIS DRAWING**

SPECIFICATIONS SUBJECT TO CHANGE WITHOUT NOTICE
DIMENSIONS ARE FOR REFERENCE ONLY

	S1	S2	 Edmund Optics®			
SHAPE	PLANO	PLANO				
SURFACE QUALITY	10-5	COMMERCIAL POLISH		TITLE	MIRROR BROADBAND 320-450nm 19.1mm DIA	
SURFACE FLATNESS	λ/10 (BEFORE COATING)	N/A				
MIN CLEAR APERTURE	Ø17.19	N/A				
BEVEL	PROTECTIVE AS NEEDED	PROTECTIVE AS NEEDED				
			ALL DIMS IN	mm	DWG NO	39204
			SHEET 1 OF 1			