

NOTES:

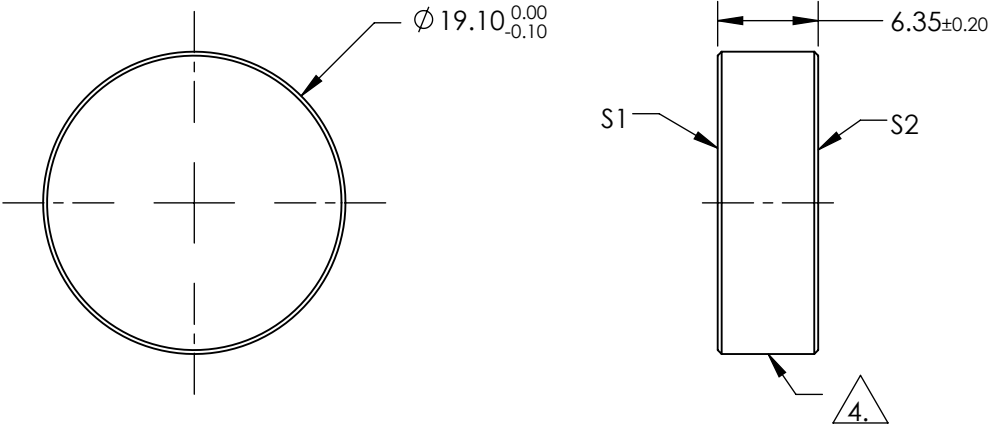
- 1. SUBSTRATE:  
FUSED SILICA
- 2. SURFACE S2 TO BE PARALLEL TO S1 TO WITHIN <3 ARCMIN
- 3. COATING (APPLY ACROSS COATING APERTURE)

S1: R(AVG) ≥ 98% @ 340-488nm @ 0° AOI  
R(AVG) ≥ 98% @ 320-450nm @ 45° AOI FOR ALL POLARIZATION  
R(AVG) ≥ 98% @ 320-450nm @ 45° FOR S-POLARIZATION

S2: NONE

4. FINE GRIND SURFACE

- 5. ROHS COMPLIANT



**FOR INFORMATION ONLY:  
DO NOT MANUFACTURE  
PARTS TO THIS DRAWING**

SPECIFICATIONS SUBJECT TO CHANGE WITHOUT NOTICE  
DIMENSIONS ARE FOR REFERENCE ONLY

	S1	S2	<div><div><div><div><div></div></div></div><div>THIRD ANGLE PROJECTION</div></div><div><div>ALL DIMS IN</div><div>mm</div></div></div> <div><div><div><div></div></div><div>Edmund Optics®</div></div><div><div>TITLE</div><div>MIRROR BROADBAND 320-450nm 38.1mm DIA</div></div><div><div>DWG NO</div><div>39218</div></div><div><div>SHEET</div><div>1 OF 1</div></div></div>
--	----	----	---